

facility will t soon.
According to lock, public relat for for the B.S.U tion of the facility approaching hoping to be able in by the middle ber," he said.
The new two-sti lity, located across towers, (Chickasaw an Choctaw) will be approx mately three times as big the older ster. Wit 6,000 squ center will and meets be able to hundred p be a lousy large gam room, a j more off space.
"Beacu is bigger we will br and mint people."
The chached l ber of it feel like with the peopl e broo...
the who did ght to ju govern rerything remedy out he...
Gs and s, and for his for his Kid- horse

Enrollment Increases
The new two-story facility, located across towers, (Chickasaw and Choctaw) will be approximately three times as big as the older center. With 6,000 square feet, the new center will accommodate meetings, a lounge, a large game room, a storage room, and more office space.

Debaters Win Louisiana
The debaters defeated their opponents in a close match, securing a victory for their school.

Miss Southeastern Pageant
The pageant crowned a new winner, who will represent the state in the national competition.

Southeastern Oklahoma State University
The university is proud to announce its new scholarship program, which will provide financial aid to deserving students.

In The News
The university's performance in the national debate tournament was highly praised by the judges.

SAVAGE '84

Enrollment Increases
The new two-story facility, located across towers, (Chickasaw and Choctaw) will be approximately three times as big as the older center. With 6,000 square feet, the new center will accommodate meetings, a lounge, a large game room, a storage room, and more office space.

Debaters Win Louisiana
The debaters defeated their opponents in a close match, securing a victory for their school.

Southeastern Oklahoma State University

In The News

Growing
The university's performance in the national debate tournament was highly praised by the judges.

Williams Honored
The university honored a distinguished alumnus for his contributions to the field of education.

Savage '84
The debate team's victory in the national tournament was a historic achievement for the university.

Miss Southeastern Pageant
The pageant crowned a new winner, who will represent the state in the national competition.

Southeastern Oklahoma State University
The university is proud to announce its new scholarship program, which will provide financial aid to deserving students.

In The News
The university's performance in the national debate tournament was highly praised by the judges.

THE SAVAGE 1984

“In the News”

Prepared and Produced by the Savage Yearbook Staff for
THE STUDENT BODY AND FACULTY OF

SOUTHEASTERN OKLAHOMA STATE UNIVERSITY

Durant, Oklahoma

Volume 52

Elizabeth Copeland, Editor
Julia D. Davis, Adviser
C. W. Mangrum, Department Chairman



R 372.05
5024
1090
2.3.
M. Davis

DEDICATED TO



JULIA DAVIS

We would like to show our appreciation to our yearbook advisor, Julia Davis by dedicating this yearbook to her. She put in a lot of time and work to make this book possible.



Local Help Asked To Trace Family

A Massachusetts resident is seeking some local help in tracing information about a pre-statehood resident of this area.

Marilyn Peterson of Chestnut Hill, Mass., contacted Lazelle Cornelison, Marshall County Historical Society secretary, in her search for information about Ransom Moore. According to Mrs. Peterson, Moore, a Confederate Army veteran, was believed to have died in or near the Madill area on July 2, 1902.

While she has been looking for information about Moore's wife, Cornelia, she has been unable to find any information. She has been unable to find any information.

Distr Civil Ca and Bonnie ne Wilson, et of \$1,249,056 by Johnny D... nge to Johnny Donald y.

Lumber Co. d Jerry I... ut Fire fire preven- he experts: e has a fire- the chim- onally in- ed annual- ing season ostructions umulation. fire in the woodstove or other if baking itchen in or elec- to.

NOTICE OF HEARING FINAL ACCOUNT AND PETITION FOR DISTRIBUTION AND DISCHARGE

Notice is hereby given that Ruth Evelyn Buck, Executrix of the Estate of Carl F. Buck, deceased, having filed in this Court her Final Account of the administration of said estate, and her Petition for Distribution of said estate and for final discharge of said Executrix, the hearing of the same has been fixed by the Judge of said Court for 8:30 o'clock a.m. on the 1st day of March, 1984, at the Court room of said Court in the Courthouse in Madill, Oklahoma, and all persons interested in said estate are notified then to appear and show cause why they have, why the said estate should not be settled among the heirs of Carl F. Buck.

Dale Wren, investigator for the Madill police department, advised the car carried a tag CRC 866 when it was sonalized tag bearing "AH" was attached to it.

... your name appears in the Oklahoma Tax Authority Division, 2500... Please help us identify the cities in the county with their own 4-cent levies. (Hence, the cities in Hughes County; Asher in Pottawatomie County; Perry in Noble County; Pond in Grady County; Snyder in Kiowa County; ... by the legislature last year—advantage of the law and called a 1-cent levy. Of the four, only ... are talking about submitting the ... state tax issue, and the outcome of ... are added the penny temporarily as a ... a critical state budget money

IN THE NEWS

... countywide ... account...

154305

Local church leaders have scheduled a series of events throughout the year in connection with the observance. The bicentennial program will include with the Christmas season...

Services at Home
Mrs. Lillian Qualls of Madill died Tuesday in her home. She was 85 years old. Services will be held at 3 p.m. at the home of Mrs. Qualls in Indian Territory. During her lifetime she was employed by Ward's Music in Marshall County. Born in Marshall County, Oklahoma, she was a member of Jehovah's Witnesses.

Income Tax Is Here
Nancy Ermons and D... are familiar with the... and changes for 1983... The... responsible for any... prisoners.

Revenue Sharing

40	Cecil Proctor, Service
41	The Madill Record, Publication
42	Parrish Elect. Co., Stove
43	Sears Roebuck & Co., Carp
44	Low's Furniture Co., Labor
45	J. J. Cornelison, Service
46	SOWDA, Service
47	Ralph Brown, Service

GENERAL FUND

884	Okla. Employment Comm
ment Tax	
885-899	County Sheriff's Dept.
900-902	County Treasurer's O
903-904	County Agent's Office
905-907	County Commission
908-911	County Clerk's Office
912	County Supt. Office, S
913	County Assessor's O
914	Court Clerk's Office
915	County Custodian Sal
21-922	County Elect Boar
923-924	Excise Board Me
925	BC&BS Ins., Ins. (w
926	BC&BS Ins., Ins. (w
927	Colonial Life Ins., In
928	Member Service Lif
(withheld)	
929	Member Service Li
930	American Heritage
(withheld)	
931	American Liberty
(withheld)	
932	Library guid
(withheld)	
933	of EDB
(withheld)	
934	soft cereals
(withheld)	
935	and snack fo

THIS N...
land around
Oklahoma
your help, and
acres, as
made... To
seat... of th...
1983

EDUCATION
This step could save the... an estimated \$25,000.
The panel is asking... Frazier's office at the high school... Monday, Bob Smith with oversees the... program met with them... cost study related to their... study study related to their... representatives... area. The panel... hip... The panel... cal mission work... nley.

BUSINESS * FARM * RANCH * INDIV. * TAX SERVICE

GENERAL FUND

884	Okla. Employment Comm
ment Tax	
885-899	County Sheriff's Dept.
900-902	County Treasurer's O
903-904	County Agent's Office
905-907	County Commission
908-911	County Clerk's Office
912	County Supt. Office, S
913	County Assessor's O
914	Court Clerk's Office
915	County Custodian Sal
21-922	County Elect Boar
923-924	Excise Board Me
925	BC&BS Ins., Ins. (w
926	BC&BS Ins., Ins. (w
927	Colonial Life Ins., In
928	Member Service Lif
(withheld)	
929	Member Service Li
930	American Heritage
(withheld)	
931	American Liberty
(withheld)	
932	Library guid
(withheld)	
933	of EDB
(withheld)	
934	soft cereals
(withheld)	
935	and snack fo

... this time no... exceed... by the... so far... 1983

Southeastern Oklahoma State University

From humble beginnings 75 years ago, Southeastern Oklahoma State University has served the educational needs of southern Oklahoma and many north Texas students who were a quality learning experience. Southeastern has been in the news constantly for its outstanding contributions to society.

But any University is only as good as the people who are its administrators, instructors and students. The Savage Yearbook want to salute those people with appreciation for their contributions.

* * *

I took a walk the other day around the campus of Southeastern Oklahoma State University. Everywhere I went, someone smiled or stopped to ask me "How are you today?" and seemed to really want to know.

The people are friendly and go out of their way to let you know they care about you. A few weeks back when I was sick with the flu, several of my teachers called to see how I felt and let me know that any problems could be worked out.

I come from a small town — its so small that everyone is either kin to each other, will be related or has been related at some time. I was so homesick that I just couldn't take it, but my roommate asked me to go to Braums for an ice cream cone. While we were there, the dorm manager sat down with us and talked about how alone she had felt when she came to school for the first time. I really felt that someone cared. I now love it here.

—A freshman, first semester

* * *

My story is a little different than most people's. I came from a very large city where people aren't friendly. If someone stopped you on the street, you automatically put your hand on your wallet and get defensive — you read so much about muggings.

Noise, hustle and bustle were a big part of my life. In the city, everyone is always rushing to work, the movies, and sometimes it seems, to





nowhere.

That's what I like about Southeastern. The people are genuinely friendly and caring. The mood is laid-back, you know, really slow and easy. And it is so quiet you can actually hear the squirrels in the pecan trees chattering and the little birds chirping outside the windows of Morrison Hall each spring.

At first, I thought why had my folks sent me to the end of the earth for an education. This is nothing but a hick town with nothing but hayseeds in it. I guess I had the attitude that if you hadn't been one in 1,000 for a graduating high school class you were nothing special.

I sure found it different here. I love it. I want to send my children to this kind of school — for any age.

It may seem slow, but I am sure getting a quality education and a taste of the good life.

—A "big city" sophomore

* * *



I thought Oklahoma was an Indian reservation where cowboys rode horses, the women were brow-beaten pioneers and the schools were one-room log cabins. Or at least I thought it in the back of my mind even though I knew about the OU Sooners, the recreational facilities and the famous Americans such as Will Rogers and Reba McEntire who had been from Oklahoma.

I was surprised to find that some of the "natives" were not

The People



Indian, had never ridden a horse and had gone to schools more modern and educationally advanced than the ones I went to on the west coast.

I had come to Southeastern with my grandparents for a homecoming while a freshman in high school. I liked the parade, the football and all. The campus was pretty with all the flowers, magnolia trees and benches. I thought maybe I might like to come here for college.

When I was a senior, I had good grades and got a chance to go to several "big-time" schools. Gramps and Granny came in for graduation and kept telling me how proud they were of me. I started thinking about their education at Southeastern and how well they had done. Maybe Southeastern was for me.

I've been here nearly three years. I no longer think I made a good choice. I know I made the right choice.

I've had classes in computers, art, journalism, drama, English, classical languages, math and so much more. I have learned so much.

One of the main things I have learned has been that the people of Southeastern and the surrounding area are big on education of the mind through classes, the body through recreation and the heart through kindnesses.

Southeastern has "The Right Stuff."

—A junior





* * *

I can't believe my four years at Southeastern have gone so fast. Graduation is just two or three months away. I don't want to leave, but I want to prove how much I have learned and how much I have grown.

I came here a scared, nervous freshman who had never been more than a mile from home. I'll bet my phone bill was \$80 that first week.

Since then I have grown up and become more sure of myself.

At first I couldn't make a decision on anything, so my poor advisor started easing me into the college routine. She would give me choices of English or History, Art or Math, and so forth to get me through the general education. Each time we met she encouraged me to

try new avenues.

Soon I was making decisions about my career. She then started helping me in other ways. I was not "appearance conscious" and she understood. My advisor took time to share new insights in clothing, health and beauty. It wasn't long before this plain little thing started feeling self-confident.

I owe my advisor a lot. This last semester has been so hard without her. She was a victim of the Oklahoma budget crunch. She has still helped me by calling to let me know she cares.

Southeastern has made me into a self-confident, mature adult who is ready to take on the world. Thank you.

—A graduating senior

* * *







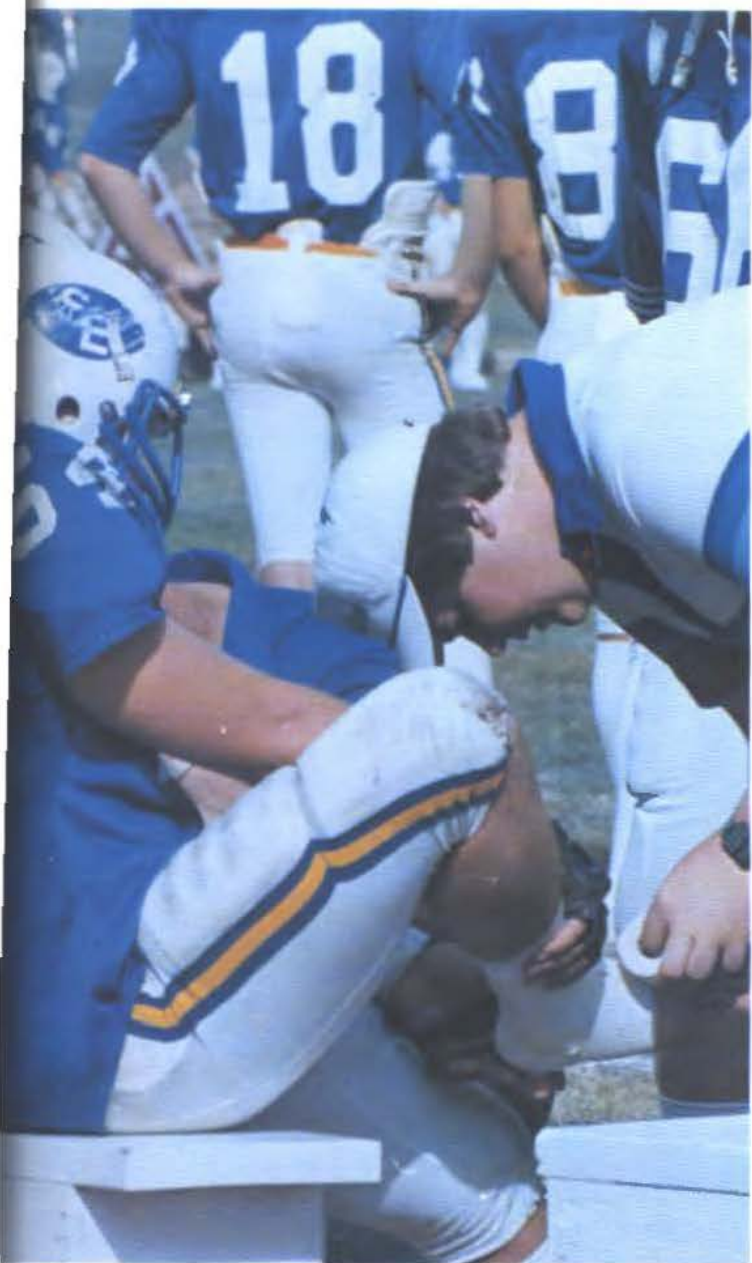
(Reprinted from 1977 yearbook)

Just a few years ago, I stood with my friends and received my high school diploma before hundreds of misty-eyed parents and got what we all knew was a sure ticket to freedom.

We accepted that diploma as if it were the

quered the world and it was mine.

Eighteen years had given me the wisdom and maturity to know I might possibly need more information to reach those faraway stars. Southeastern Oklahoma State University was probably



The Grind began again — getting out of bed, going to class, writing a theme. I thought that this would be so different than it was when I watched the clock for recess. Although I still have many answers, I am not as independent as I thought.

Friday is close at hand, and when it comes I can go home. Mom and Dad and all the family will be sitting on the front porch waiting. I have a feeling this highway is going to be traveled a lot in the future. And I bet I'll know all the trees, rocks, bridges and lakes on the way.

No one warned me that things would be like this: That sometimes this kind of ideas would just never work or even exist. And I thought I knew it all. Maybe if I take stock, open my eyes, I'll

It seems the world I had conquered back home is far away, and now an overnight bag stays packed to go down that highway with me at the drop of a hat. My views on home are changing: it used to be the place where I lived, but now it's the place I'm going to.

They say that home is where the heart longs to be . . . Perhaps that may be true after all — or as Robert Frost said, "Home is the place where when you have to go there, they have to take you in."

All day long, I see and talk to no one but the same people day in and day out. My habits may have changed, but I still have habits.

The mold is hard to break, and I don't even know if I should try to break it. It is a comfortable rut, and I am protected, happy and growing.

This rut has become my world that I live in, and I am making my own little isolation booth from the outside. I am here to grow and learn how to cope. But I get so involved with Southeastern that I tend to forget other places, other things, and other people.

Those stars indeed seem farther away than ever.

Four years of security. Four years of learning and experiencing. Four years of time out of my life — my young life. And what have I learned.

I thought that I had earned freedom. "No one can stop me now," I had said. I took four years to get additional ammunition, and boy, am I glad.

I know now that freedom is what will never be handed to me on a silver platter. I have to earn it. It doesn't just happen, you have to pay for it with responsible actions.

With what I have learned I realize that wisdom — true wisdom — is an unattainable goal, but I must strike on to it as a goal.

Soon I must move on. Southeastern has gotten me prepared for my future. But what direction will I take? What will I do?

I think I know this time.

Sigma Tau Gamma Presents David Allen Coe and Carl Perkins Sing Hits

Stage lights raised slowly while a lone spot light picked out superstars David Allen Coe and Carl Perkins during a special concert sponsored by Sigma Tau Gamma fraternity.

It marked the first time in recent years that top-billed stars had appeared at Southeastern Oklahoma State University's Montgomery Auditorium.



David Allen Coe belts out one of his hits.



Carl Perkins made "Blue Suede Shoes" famous before Elvis sang it.



Coe's backup band stayed in the shadows for the evening, but each individual note was heaven to the hundreds of fans present.



Coe is a magnetic performer who drew the crowd to their feet many times during the evening.



Songs belted out at high volume roared through the hallowed learning halls when Coe and Perkins teamed for a few duets. C and W fans thrilled to the familiar strains.

The audience came from many walks of life for a common purpose — to hear some great entertainment.



The show was well-received, especially when Coe "got down" on his most popular songs.



The duet was well worth the admission.

played for the photographers who stood inches from the stage.

In Memoriam . . .



Gary W. Herscher

Soft music often floated from his office and students congregated outside his door, laughing and admiring the instructor within.

One day the music stopped, yet the students stood outside the door, the peals of laughter silenced. Tears silently rolled down the cheeks as each one realized the music was really gone.

Gary Herscher touched the lives of everyone. His quick smile and loving concern welcomed all to stop awhile.

From an old poem, we as students and fellow educators took comfort.

*He is not gone, I say,
For he is just away.*

ORGANIZATIONS

Broadcasting Begins

KHIB Seeks Fall DJ's

KHIB Radio 92, "The station with the largest musical library between Dallas and Tulsa," as reported by disc jockeys who have worked for KHIB and other stations, has now resumed broadcasting FM 92. The radio

have training in lab situations, have taken and passed an Aircheck, and have applied for an F.C.C. license. KHIB 10 and 12



Aviation

Bangladesh Night

To Feature Art, Costumes, Cuisine

Wesley Foundation

The Wesley Foundation is making preparations for the annual Bangladesh celebration, that will be held for 6:00 p.m. on Wednesday, April 19 in the eastern ballroom. The festivities include an interest display of clubs, a ship chapter meeting, and book workshops.

Newspaper staff members attending include Sharla Frost, Mike Davis, Tom Fronterhouse & Rudy Manley, advisor. Yearbook staff includes Elizabethis

Hosts Conference

The Student Home Economics Association met Tuesday, August 30 to discuss the club's plans for the fall semester. President Brenda Ton, a senior from W. D., discussed the upcoming social which will be held on Wednesday, October 7 at SHEA's first meeting. The next possible introduction as an intro to the Fall Conference will be on October 7 at the statewide meeting. This year's Momentum chapter meeting will be on State

Today's Elections Student Senate

Michael Davis in issue of the first student election was today's

cheduled to begin at 8:00 a.m. after the senate meeting. The new Student Council will be in

Student Press Goes To Lawton Meeting

Students and advisors for The Southeastern newspaper and The Savage yearbook staffs are attending the Oklahoma Collegiate Press Association spring conference today. They

Yearbook Begins Production

1984 Savage Underway Parker Says Marching Savages

Will Increase Number This Fall

Southeastern's marching band should be bigger, better and brassier than ever.

Besides the new blue, gold and white uniforms, \$100 participation scholarships are available to band students, and a limited number of university-owned instruments are

good possibility a second jazz unit will be formed this fall. We have had a solid music ensemble.

Children's Speech Institute

"In addition to the present student body as a pool of talent, we are drawing quite a bit of interest from high school students planning to attend college both this fall and later on down

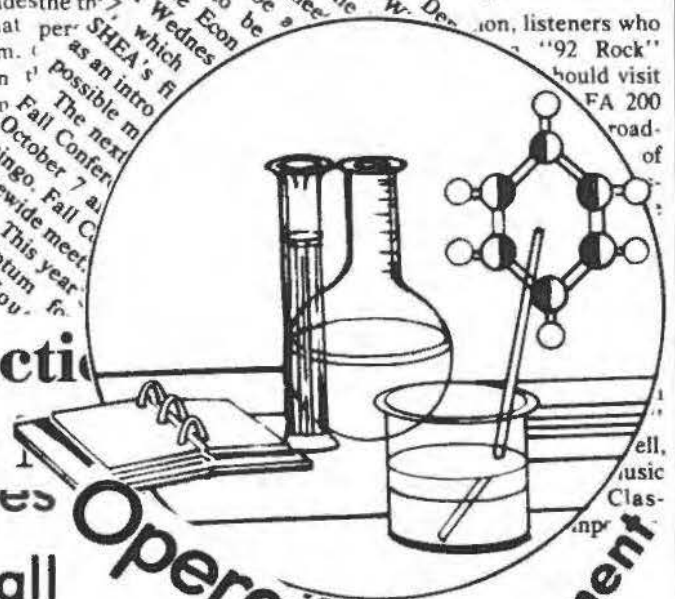
"We started a wind ensemble this year that has proved quite popular, and will be offered for credit beginning in the fall," the director said. "We have some talented students in a jazz band, and there's a

Music Dept. P. Entertainment Week

The Southeastern Music Department will present shows featuring opera and musicals. On Saturday, the department will present "The Little Prince" at 7 p.m. in

will feature Southeastern instructors Pablo Pedraza and Gary Herscher. "I feel that singing and performing as teachers can reinforce what we are teaching our students," Pedraza, voice teacher, said.

The recital itself will begin with classical Spanish music. According to Pedraza, classical Spanish music is receiving greater emphasis today from music critics. The classical music featured will be from Baroque to contemporary classic music. The rest of the show will be in English language.



STUDENT SENATE

The Student Senate is the governing body for students. Along with legislative duties, the senate provides activities for student entertainment, recreation, education and enrichment. Each organization on campus is allowed a representative, and officers and other members are elected each year (with special senators elected for the summer term).



Members and sponsors of Student Senate are: (left to right, first row) Mary Doan, Sharon James, Lisa Martin, Angie Casey, Edie Hammack, Lisa Cummins (second row) Terry Matlock, Woody Karper, Antonio Spencer, Jerry Stewart, Kahled Chowdhury, (third row) Dr. John Krattiger (sponsor), Greg Jenkins, Jay Paul Gumm, Michael Davis, (fourth row) President, Michael Ross; Secretary/Treasurer, Renee Petree; and Mark Montgomery, Vice President.

RHSA



Resident Hall Student Association (RHSA) was reorganized during the fall semester. It is open to all residents of Choctaw and Chickasaw Towers. RHSA sponsors exercise classes and numerous other activities. This organization's aim is to make living in the dorms a more enjoyable experience.



COMPUTER CLUB AND PSYCHOLOGY CLUB

The Psychology Club is an organization formed for those who are interested in psychology and/or are psychology majors. The club tries to improve relations between faculty and students, nurture personal growth and promote interest in the field of psychology. The Computer Club is an organization formed for students interested in Computer Science. It is affiliated with the national organization of the Association for Computing Machinery.



The Psychology Club officers are: Dr. Engles, Advisor; Denise Bates, President; Jeania Large, Vice Pres.; Betty Edwards, Sec-Treas. The Computer Club members are: Mary Moore, Sunjay Tandan, Roger Richmond, Johnny Carrol (Advisor). Back row, Ron Denham, Joe Somebody, Micheal Morris.



ACCOUNTING CLUB



The Accounting Club is an organization for accounting majors and minors. Meetings are held regularly and activities include lectures by guest speakers, field trips and a special banquet for members.



Accounting Club Officers: (left to right) Beverly Mullenix—Sec., Sandy Pratt—Pres., Sharon Wilson—V. Pres., George Moffatt—Treas.

Left to Right: Sharon Wilson, Debi Goodner, Sandy Pratt

Left to Right: Ron Teague, George Moffatt, Tom Vickers, Mike Reimer (Speaker from Conoco)



HOME ECONOMICS

The Home Economics Club is geared toward professional development, learning and recreation. It is an affiliate of the American Home Economics major and minors. Monthly meetings are held along with special programs and activities.



Officers for the Home Economics Club for 1983 were: Advisor—Kathleen Meadows; President—Brenda Dennis; Vice President—Patricia Sumner; Secretary—Jean Fortenberry; Officers for 1984 are: President—Rebecca Nichols; Vice President—Retha Eastwood; Secretary—Donna Harris.



MANAGEMENT AND MARKETING



The Management and Marketing Club is oriented for and by business students. Sponsored by Steve Moody and Barry Ellis, the club participates in fund raisers such as bake sales and car washes.

Officers for the club are pictured at left: Roena Schretten, treasurer; Mr. Steve Moody, advisor; Dione Anteau, secretary; Harry "Mac" McMillan, president; Renata Scantlin, vice president.



Having a meeting to discuss plans for the Lite Road Race. Toured Potter Sausage, Apparel Mart in Dallas and World Trade Center in Dallas. They are clockwise from left: Dan Olson, Christopher Nwaeze, Randy Westbrook, Renata Scantlin, Harry McMillan, Dione Anteau, Roena Schretten, Cathy Schroeder and Moody.



Members of the club include: (kneeling) Randy Westbrook, (standing front) Robert Smart, Jeanie Horner, Christopher Nwaeze, Renata Scantlin, (standing behind) Steve Moody, Roena Schretten, Susan Stallings, Harry McMillan, Cathy Schroeder, Dan Olson, and Dione Anteau.

PI OMEGA PI AND KAPPA DELTA PI

Pi Omega Pi is the honorary business fraternity. Members are selected on the scholarship and leadership abilities in business education.



Front—Catheyn Wright, Gina Justus, Deana Taylor, Ruby Brown. Back—Susie Wilson, Carla Edge, Dr. Robbin, Lois Crow, Stan Whisman, Lisa Miller. Not pictured—Charlene Cooper.



Kappa Delta Pi is the national honor society in education. Front—Advisor, Barbara Rackey, Deborah Clark, Donna LeMonier, Beverly Puckett, Nancy Kirk, Donna Hair, Back—Charlotte Estep, Kimberly Bayliffe, Hayley Rambo, Mattie Wood, Patricia Summer.

ALPHA ETA RHO



Alpha Eta Rho is the honorary aviation fraternity at Southeastern. The club studies and promotes the role of aviation in business, industry, education and other fields.



Above are the members of Alpha Eta Rho. The advisor is Ken Stege.

SAVAGE DEBATERS

Debaters Sharla Frost and Steve Fuoco (at right) are shown with two trophies they brought home this semester. The team won first place at the "Not Ready for Ivy League" tournament.

The debate team (bottom) includes Troy Reust, Sharla Frost, Steve Fuoco, Kirk Ashton (advisor, coach), and Mark Montgomery.



WESLEY FOUNDATION



Wesley Foundation Officers (left to right), Julie Kennedy, Darnice Nyce, John Moran, Chris Nwarze, Hal Ray.

Wesley Foundation Christmas Party, (back row left to right) Mike Harmon, Ming Huynh, David Haus, Joe Jacobi, John Moran, Hal Ray. (front left to right) Unei Kenemegwai, Julie Kennedy, Austin Erneagwai, Jonice Bedwell, Darnice Nyce, Chris Nwarze, (sitting) Rev. Ross Kervin, Mack Bedwell.



KHIB

KHIB is operated and advised by faculty member Ben Chappell.



At right: This represents studio production facilities at KHIB. Below, Sheri Massuere and Pam Wynn decide the record sequence to be put on the air.



RADIO 92



Radio 92 is located on the second floor of the Fine Arts Building. It is managed and produced by students of Southeastern Oklahoma State University.



Christi Wallace (left) D.J.'s a new broadcast on KHIB, (Bottom left) is Chris Ferris, Sheri Massuere and Pam Wynn are a few of the staff members on Radio 92. Chris Ferris, manager, prepares a new commercial for the listeners information.



NEWSPAPER

Sharla Frost, Senior from Fort Towson, is the 1983-84 "Southeastern" editor. (Middle left) Sharla, Cissy Crusoe and Bobby Robbins work on the layout of the paper. (Middle right) Bobby works on one of the many ads for the paper. (Bottom left) Cissy pastes up copy on an edition of the Southeastern. (Bottom right) Micheal Davis prepares papers to be mailed to subscribers.



STAFF



Rudy Manley (top left) is the faculty advisor for the Southeastern. Tracy Whited (middle left) took over the job of designing advertisements after Robbins transferred. Crusoe and Tony Reynolds (middle right) are freshman staff reporters. (Bottom left) Chance Allen is the Sports editor for the newspaper. (Bottom right) Davis, Allen and Frost put the finishing touches on an edition of the paper.



YEARBOOK

The Savage Yearbook is supervised by Julia Davis. It takes a lot of time to capture events with various organizations and individuals.

Elizabeth Copeland, Editor (top) works on pages, spelling and format of the yearbook. Randy Copeland (top left) selects page designs and works on the layout of the divider pages. Gwen Frost (middle) types, draws layouts and takes pictures. Julie Kennedy (bottom left), Sarah Holland (bottom right) types and writes copy.



STAFF



Elizabeth Copeland (left) is working on layout for the divider pages, Julie Kennedy (middle left) figures headlines for the yearbook. Gwen Frost (middle right) is loading the camera to take pictures, Rudy Manley (bottom left) shows Elizabeth how to roll film for the camera, Randy Copeland (bottom right) is coordinating pictures for layouts.



WILDLIFE SOCIETY

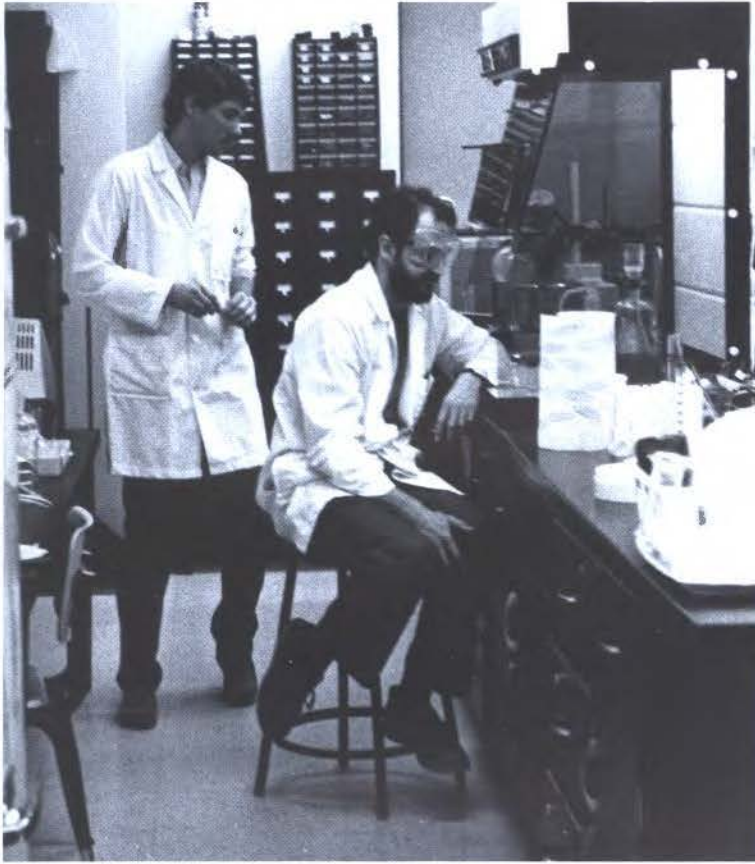


Wildlife Society is an organization that lets students study and aid animals, it sponsors speakers at their monthly meeting and honor an outstanding wildlife student at their annual banquet.

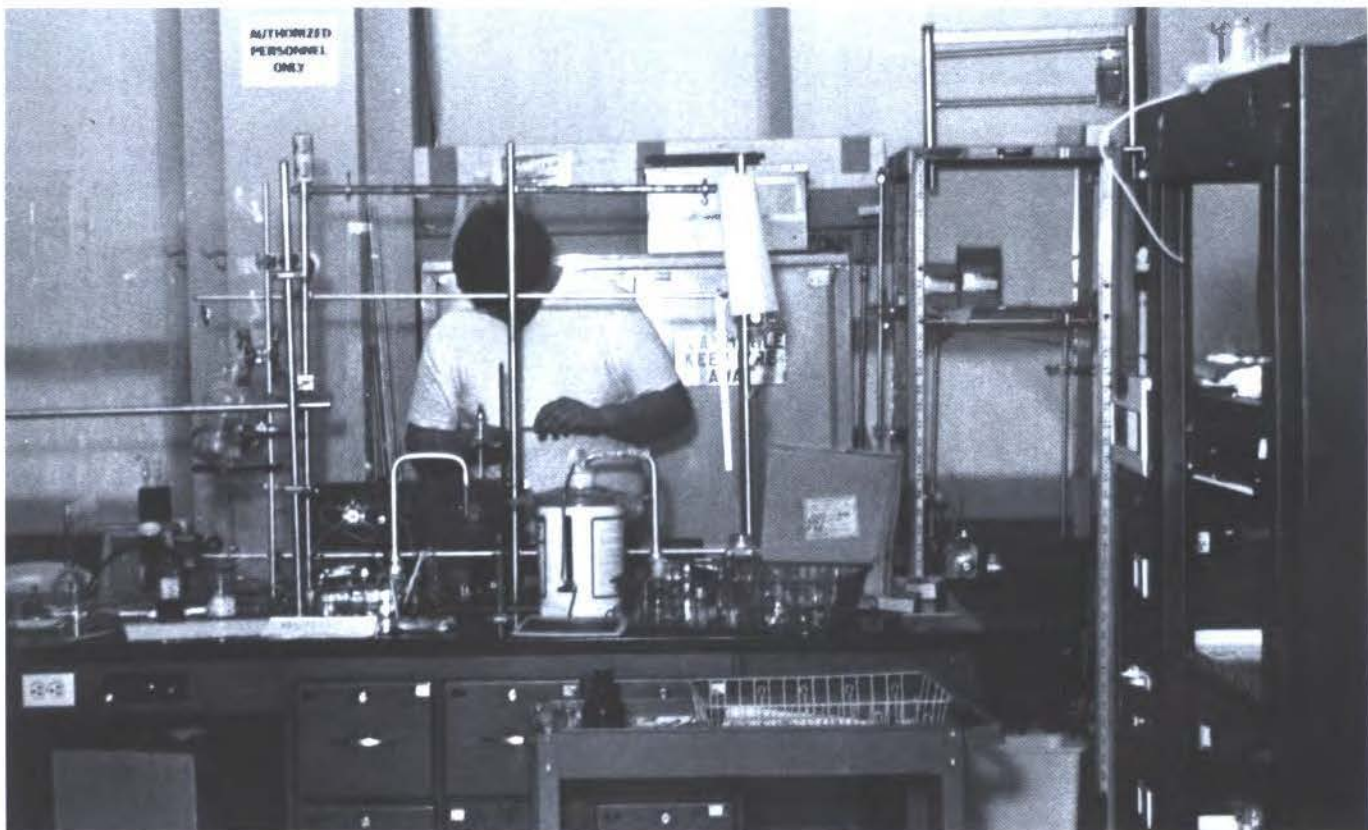


Front row (left to right) include: Derek Citty, John Doe, Stewart Jacks, Dr. Connie Taylor (advisor), Back row: Mary Mulkey, Vicki Pardue, Jonkeeta Wiggins, Garry Stubbs, and Lisa Davis.

BIOMEDICAL RESEARCH PROGRAM



Dr. Jack Robinson is the director for the Biomedical Research Program. It offers opportunities for undergraduates in research both biomedical and physical fields. The program is for students of ethnic minority descent or socioeconomically disadvantaged backgrounds who show a strong interest and aptitude for science.



BSU

The Baptist Student Union is a Christian organization for the fellowship and growth of students. The BSU has many activities, noonday lunch, vespers, intramural sports teams and other activities for everyone.



SAVAGE CHEERLEADERS



The Southeastern Cheerleaders for 1984 are Katy Buckley, Lisa Davis, Susan Robinson, Karen Singleton, Melanie Lankford, Darah Pitts, Renea White.

OKLAHOMA SUMMER



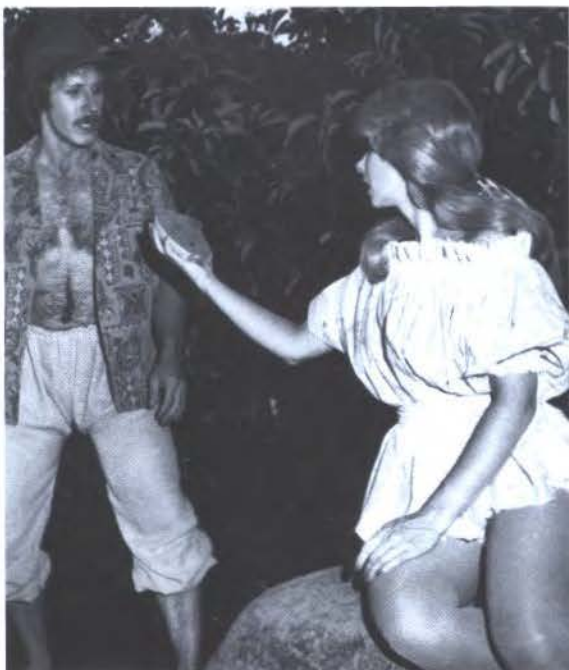
On this page is the play, "As You Like It".
Starring at right are: Ken Risch as Orlando,
Cindy Hyatt — Celia, Kris Nicolau Sharpley
— Rosalind. Bottom Picture, left to right:
Cindy Hyatt — Celia, Ken Risch —
Orlando, Walter Schorn — director, Kris
Nicolau Sharpley — Rosalind.



THEATRE FESTIVAL



Picture 1) "MIDSUMMER," with Don Hooper as "Oberon" King of Farris, William Calem as "Puck". 2) Louise Bostic making mask for Jason Kenny who played "MacBeth" — used as decapitated head of MacBeth. 3) Molly Rizzo, Jim Harbour, Riley Rizzo, Sabina Weber. 4) "THE APPLE TREE" Ken Risch — "Adam", April Gandy — "Eve". 5) "MIDSUMMER," Walter Schron — as "Nick Bottom-A Wearer", Kevin Alen Murray— "Pter Quinee — A Carpenter", John Rizzo — "Snug A Joiner".



OPERA SINGERS



Kneeling—Donny Crump, Standing—Roland Burks, Bill Garrett, Roy Bean, Jean Deisher, Tammy Buchannan



Standing (left to right)—Clayton Brunner, Ricky Smith, Terry Foster, Sitting (left to right)—Kathy Stuckland, Lori Lemons, Cynthia Ebert, Roy Bean, Roland Burks, Billy Garrett, Donny Crump

CHORVETTES AND CHAMBER SINGERS



(Front) Jean Deischer, Walta Jenkins, Sharon James, Roy Bean, Elaine Luna, (back) Roland Burks, Terry Matlock, Valerie McWilliams, Karen Chowning, Judy Hawthorne, Donny Crump, Mike Max, (Back) Andy Alexander

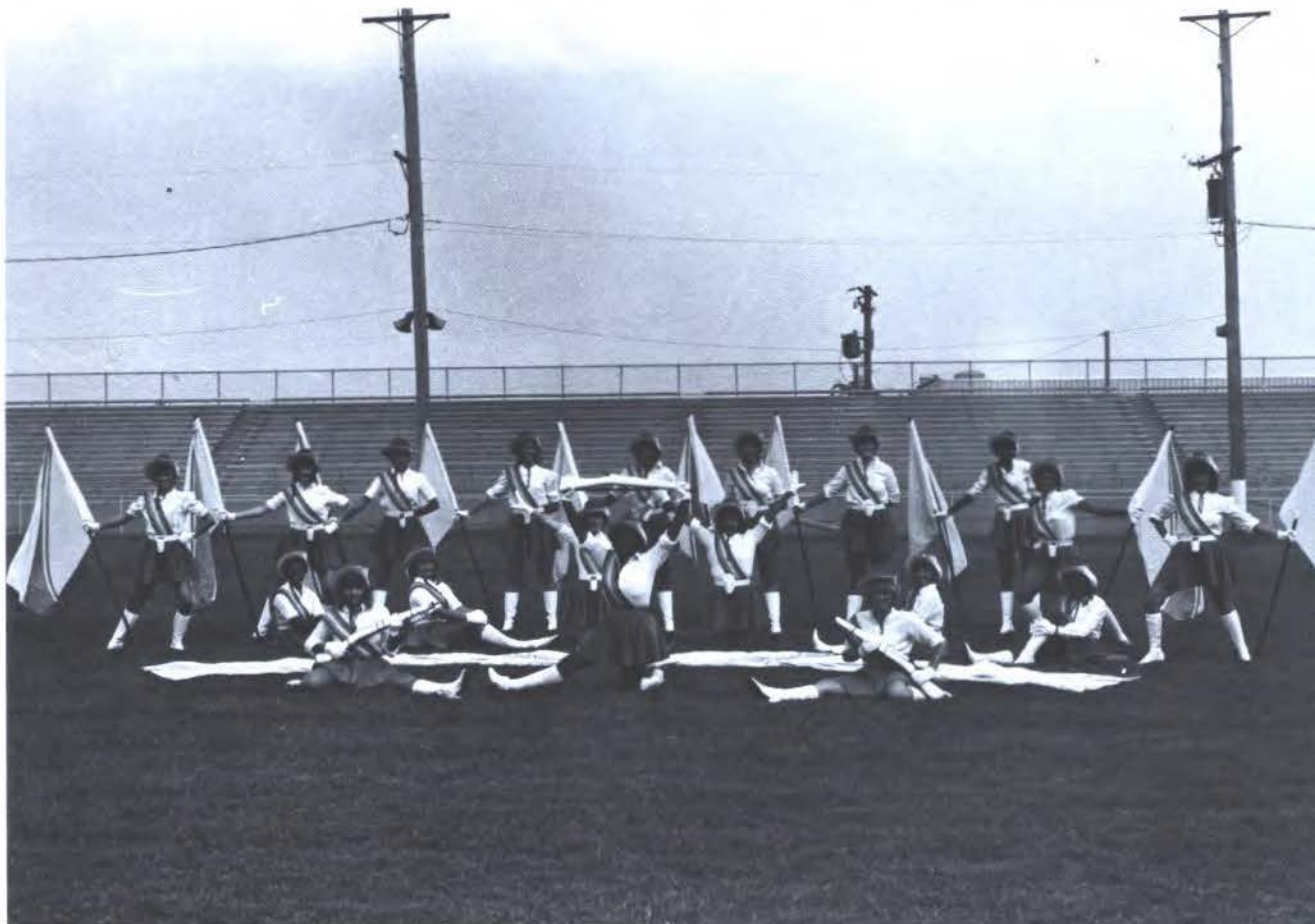


Clayton Brunner, Jean Deisher, Roland Burks, Terry Foster, Rickey Smith, Cynthia Ebert, Billy Garrett, Tammy Buchanan, Mike Max, Lori Lemons, Roy Bean, Darryl Rainbolt

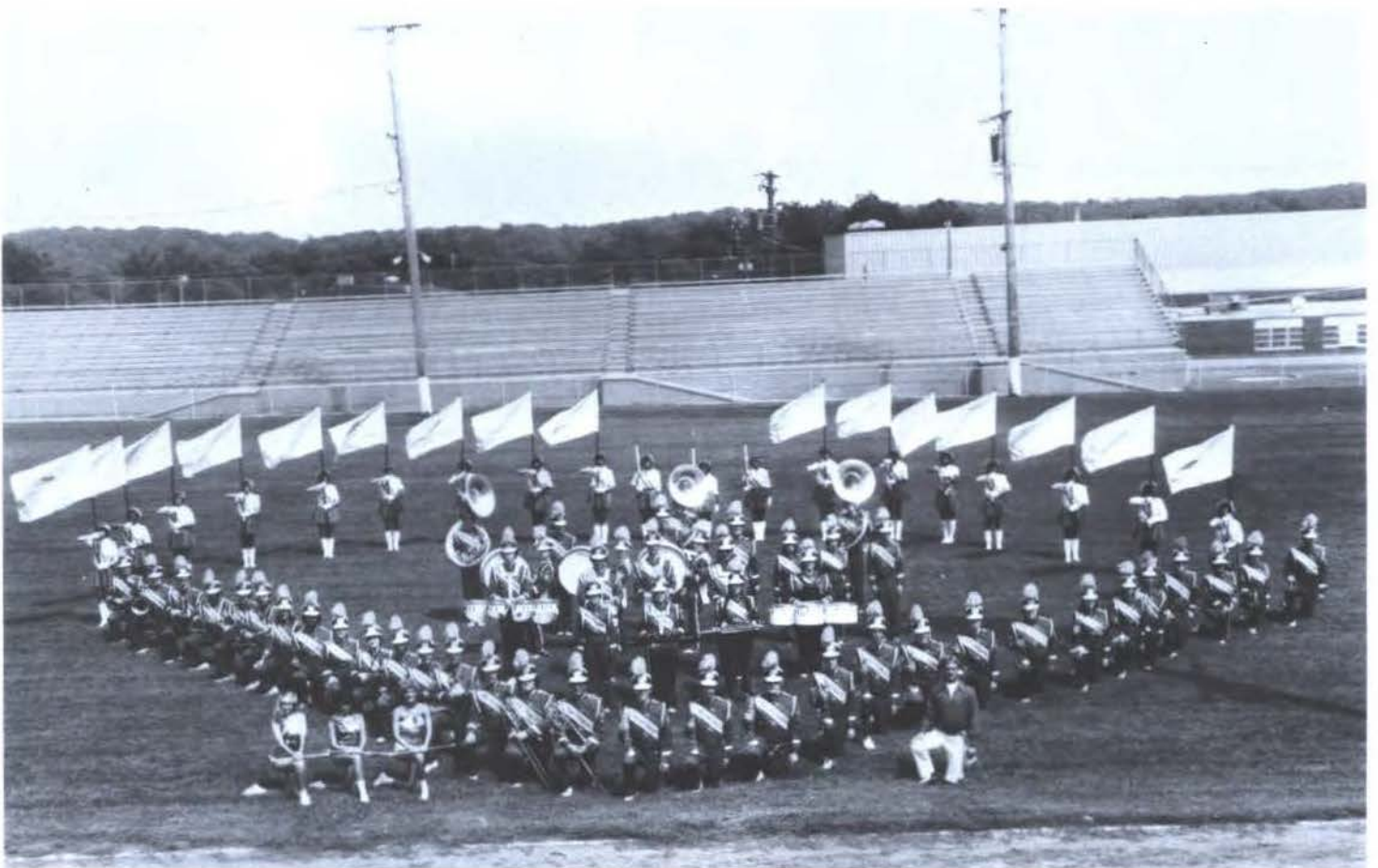
TWIRLERS AND COLOR GUARD



The Savage Twirlers are Darla Presley, Grace Garza, and Jamie West. The Color Guard members (First row back) Angela Cline, Cindy Hodges, Joni Durant, Vicky Richardson, Donna Scribner, Monica Scott, Hayley Rambo, Evette Banks, Jackie Jones, and Carla Whorton. (Second row middle) Lonzine Washington, Tonya January, Jill Burgins, Becky Lester, Becky Van der Helm, Jill Brown. (Third row, front) Joani Toland, Ruth Scribner, Angie Casey.



MARCHING SAVAGES



HALL OF FAME



President Leon Hibbs inducts four new members into the Hall of Fame.



The four new members of the Hall of Fame.



Kim Ketelsen, former SOSU tennis player.



J.M. Carey, former football player represented by Mrs. J.M. Carey.



Robert Olufs, former Savage baseball pitcher.



Dr. Don Parham, baseball coach.

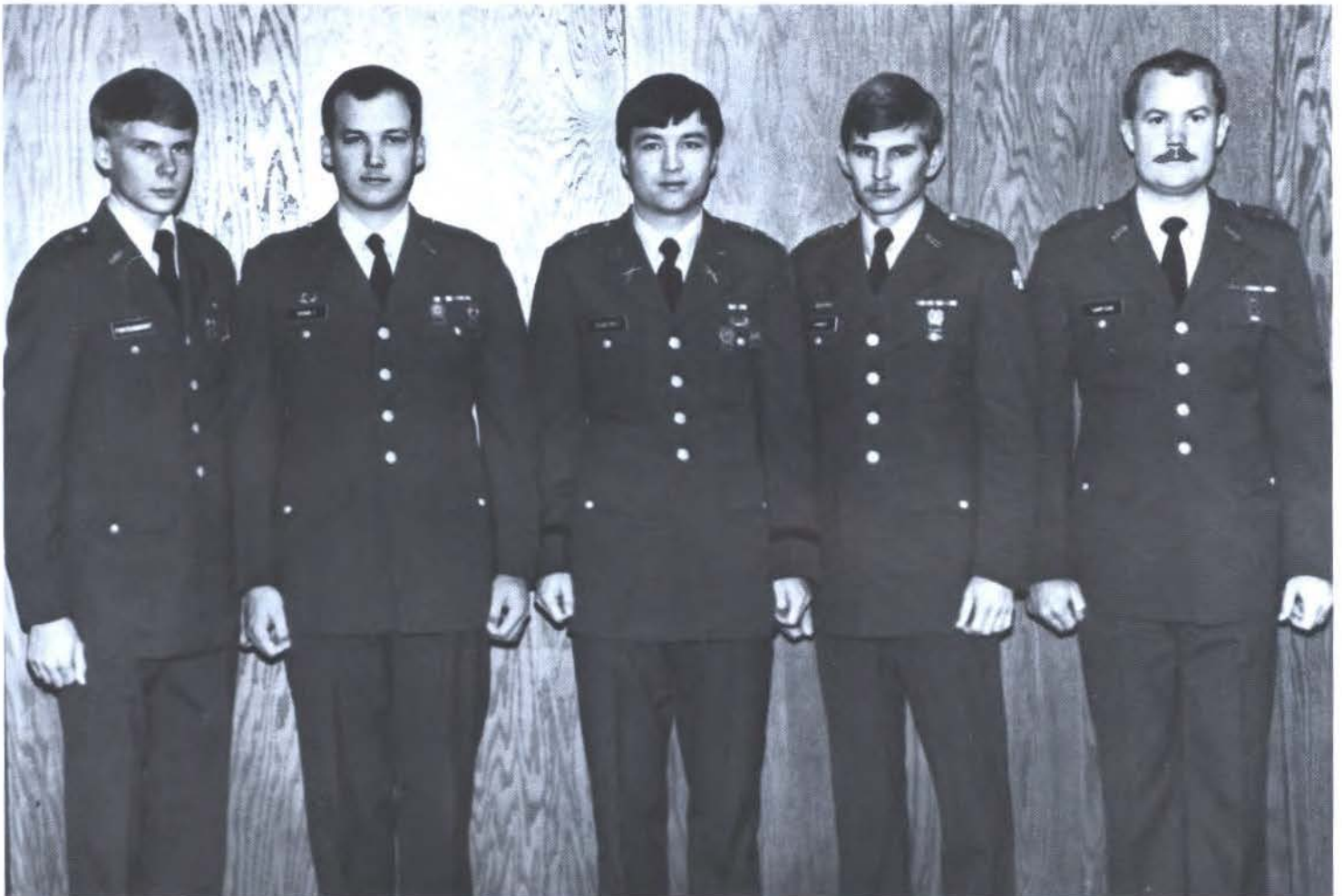
ROTC



Army ROTC (Reserve Officer Training Corps) is a program that offers a type of leadership training to students, it develops an individual's inherent ability to stand up and speak.

An Advanced ROTC course is available for students who have had active service or attended Basic Camp.

Pictured at right is Sargeant First Class, John Keithly and Lt. Col. Joel Boyd are shown pinning a medal on Johnny Crabtree. Some of the ROTC members (bottom picture) include: Hugh Fortenberry, Paul Grimes, Johnny Crabtree, Wesley Parker and James Simpson.



KAPPA DELTA PHI

Kappa Delta Phi is the honorary education fraternity on campus. Members are selected by a nomination process and on the basis of the academic and leadership records. The group holds a banquet and studies the progress of education in Oklahoma and the nation.

The Kappa Delta Phi members are: (Front row) Dr. Jim Mitchell (Sponsor), Beverly Puckett, Hayley Rambo, Denise Lovell, Mattie Wood. (Standing) Pratrevia Taylor (President), Brenda Loper, Donna LeMonier, Dr. Lee Ball (Co-Sponsor), Dorothy Silver, Dr. Dovie Walker.



MANY RETURN TO SCHOOL

Classroom conversation brings encouraging words as students come to grips with the problems of schoolwork — especially those who are returning to schools after some time.

SOSU president Leon Hibbs has been a special friend to the Many Return to School program. He has taken time from his busy schedule to assist members such as Cathy Campbell, Diann Brewster, Patsy Tyree and Lawanna McCann.

MRS offers special assistance to adults taking regular college courses helping them get back into the swing of things after being away from the classroom a few years.

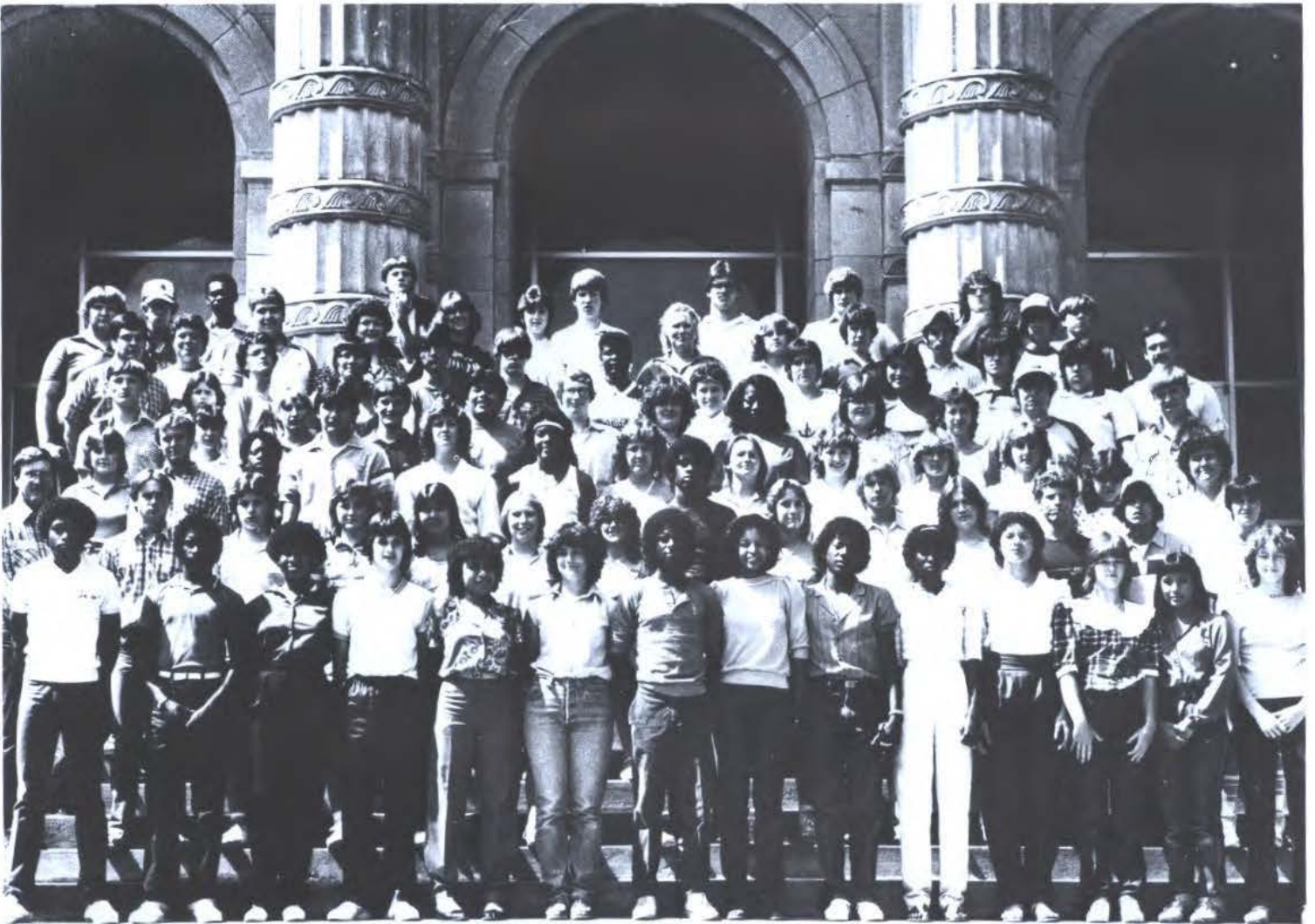


WOMEN STUDENT ASSOCIATION

Women Student Association plays a major role in helping the female students on campus by organizing meetings and seminars to aid the women in making their place on campus. The organization is both for the new student on campus as well as the older woman facing college, perhaps for the first time since high school.



UPWARD BOUND
SUMMER
'83



'83

CAMPUS BOOKSTORE

The campus bookstore is the place to purchase your books and school supplies such as notebooks, pencils and all other types of supplementary materials. They also carry many name brands of athletic wear. Among other merchandise sold is greeting cards and momentos for almost any occasion. Below shows one of their holiday clearance sales.



HONORS

Debators Begin Season Summer Honor F

First Tournament At OC

by Sharla Frost
 "I don't want to debate the merits of sperm banks!" was the reaction of several debate team members upon hearing the possible topic list for this semester. The topic will be announced on September 10 by the national Cross Examination Debate Association council and SOSU teams will have first tournament September 29 at Oklahoma Christian college in Oklahoma City.

Returning team members are Sharla Frost, Steve Fuoco, Greg Jenkins, Bobby Robbins, Mark Montgomery, Carla Wharton and Jonkeeta Wiggins. These students will be joined by Chris Allen, Tina Jenkins, Graham and

Linda Geman, Augustine Emeagwai, Kariklia Kaparaki, Mozafar Moghadami, Godwin Nwaogwugwu, Carla Samuel, Antonio Wong, Kimberly Barker, Anita Barnette, Boasen, Shep

Lebanon, OK; Cindy Linton, Lehigh; Sallie Frazier, Sylvia Hendricks, Colleen Lamb, Paige McNatt, Madill.

Cindy Bates, Mary Beth Moore, Marietta; Glennis Ring, Maysville; Stacey Horton, Wanda Rowland, Lester; Jeanne Pineiro, Mustang; Sung Yong Chon, Oklahoma City; Frank Blocker, Pernell; Mark McClendon, Plano, TX; Jean Fisher, Pottsboro, TX; Pamela Polk, Rattan, OK; Kelvin Anderson, Lori Eckles, O'Toole, Lou Smith, Sherman, TX; Sharon Sika, Alaska; Altha M, er, Virginia

Bungalow, fur, Dennis Joines, Jackie Mill Caddo; S Kend D; Holder, A Penny Win Peter Gi WY; Jeana liam, Co; Crump, Ju rina Turner Badakhs Hamrick, Ronda Br Knoll, Ja Wayne T; Winfree, D Ann Mill Ueltschey TX. Samuel Ahmad,

Staff Members Win Honors At Press Meet

Southeastern students have known for an entire year that The Southeastern newspaper had the best cartoonist in the state. Last week at the Oklahoma Collegiate Press Association Meeting, the Taylor received the first place award.

The competition was held April 22 and 23 at Cameron University in Lawton. Schools from all across Oklahoma attended the conference for both competition and instructional seminars offered by the association.

Four students from Southeastern, Michael Davis, Tom Fronterhouse, Bart Craytor, and Elizabeth Copeland, attended the meeting. They were accompanied by Julia Davis, yearbook advisor, and Rudy Manley, newspaper

Letter To The Editor
 Stillwater; King Tuesday; Jal Sigma Tau; Baret Banquet.



Alpha Chi Initiates 40 Charter Members

and Dr. John R. W... The charter me... Terri L. Barton of... Edward Biela of Ft. W... Pansy Boney of Hendri... Teresa Brady of Parsons, Neb., Daryl Buck of Kingston, Brenda Byles of Durant, Juliet Cathey of Durant, Mary Cooke of Durant, Pamela E. DeLasha of Kemp, Patty A. Duncan of Hugo, Barry Eller of Atoka, Mary Estep of Tishomog, Margaret S. Everett of Frost of department, also based on... Assistant professor... experiences. Star... published at SOSU for ca... course has been esta... A special three hour... Center and Southeastern... Regional Education Service... Guidance Center in Idabel... ment of Human Resources... countries from the Depart... Choctaw, and McCurtain... between people in Bryan...

Pedraza Performs In Texas

Opera Successful
 The award is a one-year full tuition scholarship which Ms. Eastwood will apply to her senior year's work at Stillwater, Oklahoma.

The Mullins Scholarship is a memorial scholarship funded by Mr. and Mrs. Tony Mullins in the memory of their daughter, Mary Mullins, who was killed in an airplane accident in 1973.

Jan Epler, an instructor in the English department, opened the program with a varied selection of poems that she felt reflected her taste and her moods. She was followed by a variety of modern, medieval, and classical poetry. Howard... was the third... the program... selection of... a native Okla... in the stu... of Calita. Dow... she said, "I'm challenging the students to make this an... special children."

Alpha Taus Make Donation

English literature followed that... from... parody colleg... poetry. Kenneth... one schoolmates who had... after several...

Eastwood, Frost Receive Award

WHO'S WHO

Ms. Teresa Armstrong
Ms. Terri Lynne Barton
Ms. Kimberly Jo Bayliffe
Mr. Edward Grady Behrens
Ms. Linda Jane Bordner
Mr. Daryl Eugene Buck
Ms. Brenda L. Byles
Mrs. Juliet C. Cathey
Mr. Asa Lee Chambless
Mr. William Tyler Cobb
Ms. Charlene C. Cooper
Mrs. Patricia Ann Craig
Mr. Donny Lee Crump
Mr. Ronald Leland Denham
Ms. Brenda Kay Dennis
Mrs. Lecretia Dufur
Mrs. Margaret S. Everett
Ms. Sharla Jo Frost
Mr. Paul Alan Grimes
Mr. David Byron Gunnels
Ms. Lea Ann Harles
Ms. Jeannie Harryman
Ms. Jeanne Rebecca Hixon
Ms. Stacey Kay Horton
Mr. George Huebsch
Ms. Melanie Sue Hughes

Mrs. Nancy Ann Kirk
Ms. Paige L. McNatt
Ms. Jennifer Lea McReory
Mrs. Debra McCauley Manley
Mr. Roger Don Martin
Mr. Duane Allen Meredith
Mrs. Mary Beth Moore
Mr. Kevin Allen Murray
Mr. Christopher C. Nwaeze
Mrs. Vicki Wendt Pardue
Mr. Darryl Joe Rainbolt
Mr. Roger Leon Richmond
Mrs. Kimberly Wise Smith
Ms. Peggy Smith
Ms. Elizabeth L. Sollene
Ms. Pratrevia Ann Taylor
Mr. Ronald H. Teague
Mr. Steven Dale Thomas
Mrs. Angelia Dawn Wagner
Ms. Tracy Lynn Whited
Mr. David W. Whitlock
Mr. Kacey Williams
Ms. Deena Sue Willingham
Ms. Sharon Jane Wilson
Ms. Pamela Kerry Wynn
Mrs. C. Yvette Young

PARSON SCHOLARS

Seniors

Clay Bartrug
Edward Behrens
Daryl Buck
Tyler Cobb
Sharla Frost
George Huebsch
Denise Lovell
Steven Thomas

Juniors

Terri Barton
Kenneth Campbell
Stewart Jacks
Karl James
Sharon James
Greg Jenkins
Leon Mayes
Mary McFatridge
Cyd Metty
Renna Petree
Micheal Ross
Garry Stubbs
Carla Wharton

Sophomores

Donna Bufkin
Micheal Combrink
Laura Engles
Jay Harvey
Richie Haynes
Faith Jacob
Joe Jacobi
Shelley Knott
Cynthia Linton
Lisa Martin
Wesley Medlin
Tony Mitchell
Karen Six
Mary Thompson
Patrick Tray
Joe Harris

Freshmen

Angela Barton
Terry Brown
Renee Castro-Sweedden
Jill Davis
Becky Fodge
Annette Heil
Kenny Jones
Shanna Poor
Jerry Smith

HOMECOMING 1983

Rattan Senior Charlene Cooper was selected by a panel of judges to reign over Homecoming activities. Charlene represented Sigma Kappa Sorority and was chosen for her contributions to Southeastern Oklahoma State University and various campus organizations.

Terri Barton, representing the American Chemical Society was Second Runner-Up. Sharla Frost, representing the Society of Parson's Scholars was selected First Runner-Up. The three women were chosen from 16 candidates who vied for the honor of Homecoming Queen.



HOMECOMING 1983

1) Queen Charlene Cooper and escort Steve Fuoco during her spotlight dance 2) Jackie Young, represents Phi Sigma Epsilon 3) SOSU cheerleaders cheer on the crowd 4) Enthusiastic fans 5) Scramble for that Ball!!!!!! 6) Band lends the football team support 7) Candidates and their escorts wait for the announcement 8) Jamie West, the highlight of halftime entertainment.





Charlene Cooper
Sigma Kappa Sorority



Sharla Frost
Society of Parsons Scholars



Terri Barton
American Chemical Society



Peggy Smith
Sigma Tau Delta



Jacqueline Young
Phi Sigma Epsilon

HOM
Q
CAN



Linda Simmons
Many Return to School



Kay Bayliffe
University Band



Susie Haerber
Sigma Pi



Dawn Castleberry
Equestrian Club



Darla Crouch
College Rodeo



Celena Rogers-Elmore
Sigma Tau Gamma Fraternity

COMING
EEN
DATES



Lisa Bacon
Baptist Student Union



Denise Bates
Psychology Club



Kimberly Smith
Alpha Sigma Tau Sorority



Shelia Cooper
Tau Kappa Epsilon Fraternity



Sharon James
Native American Council

HOME-COMING COMING PARADE



1) First place winner **Mrs. Pac-Man** was done by Many Return to School 2) Wesley Foundation's float "**Bury the Tigers**" was taken from the video game "**Dig Dug**" 3) Darla Presley, Miss SOSU, regally leads the parade 4) CURA "Stampedes" the crowd with their float.



SPORTS

Jones Is New Assistant Football Coach

Southeastern Director of Athletics, Dr. Don Parham, has announced the hiring of Ed Jones as assistant football coach.

Jones, formerly head coach of the highly successful Wewoka High School football team, was an excellent coach for the Oklahoma State University Cowboy football team at Wewoka.

back and was named State in track, where he competed in the mile, 440 relay and long jump.

Jones, along with his wife Tanya, daughter and son Bruce, are moving to Oklahoma City shortly.

In those three seasons, Jones led two teams to the State Playoffs and compiled a 21-13 record.

In his nine-year career, Jones was track coach at Wewoka the last five years.

"I'm looking for long-term positive improvement in our program," Jones said.

Baseballers Get Ready For SOSU Football

Parker's solo blast came in the second inning off the pitcher, Manny Sarver. Brian Harper contributed a two-run shot in the fourth inning by Cecilio.

ated Press Internat' For The Chicago Wh' gained one pitc. ily lost another. Lloyd Bannister, the e. ttle Mariners left- nder who signed a five-

This Is The Year For Equestrian Camp Planning

miss practice for four days. Mike Schmidt, who underwent minor surgery at Methodist Hospital in Philadelphia to correct an irritation in his right leg, is planning to return to the saddle in the next few weeks.

Dr. Phillip Marston, a team physician at Southeastern, said the surgery was successful and the player should be able to return to the field by the end of the week.

Among the participants in the camp will be Dan Loonsbury, originally from Dexter, New York and a graduate of the University of Arkansas. Speedy Cook was named head coach in December. The former offensive back-cutting horse field coach has been on the Southeastern football staff for the past three years.

Plans for the recent recruitment of 13 members of the football team who live with new football players who after the week transferred here from other universities.

University of Houston; Chuck Easley, Navy College in Corsica, Texas; Kevin Gannon; James Ginn, Arkansas State University; Efreem Hamilton, Mexico Military Academy; Jim Komstock, Central; Tom Cisco, Junior College; Obert, New Military Institute; Ross, North Texas; A&M Jr. Lonsbury, football practice; the end of we are expected, added, to

Savage Netter

TAHLEQUAH — Southeastern's Greg Maye won his opening singles match here Saturday in the Oklahoma Intercollegiate Conference tennis tournament.

Savages in the drive for the Oklahoma collegiate Conference Monday, the East handed the East Tigers three losses in the OIC but advanced to the quarterfinals.

Fall Baseball Starts

son last season, a Delson, a 0 figures to age's four ason, was the right ve off the ter Rudy rasquad first 20, 10-15 sign up for it. Coordinator Pat plans are to "ing a

They then romped over the Tigers for two more victories in a double header that had been postponed from an earlier date. Games tomorrow is 11 a.m. KSEO will carry the Savage games live during the playoffs.

Asian nations represented here at Southeastern, as well as from Latin America, England, and the United States. The official fall soccer team is open to all students at Southeastern, and Morales said the new official team is not a team made up entirely of international students, but it is open to all men students who are interested in soccer.

Anyone interested in trying out for the fall soccer team should contact Mr. [Name] Extension 206.

men h. "We've year that Hudson. In the coached by Doug Murray andmond Wright. In the double defeated by Jrc and Chuck Weber homa Baptist Univ. Reisman comments he wasn't sure how the players had lead during the year. "I don't know how well we would because at the beginning of the season"

Savages Take OIC; Begin Playoff Action

The Savage baseball team will be in Oklahoma City tomorrow to begin play in the District Nine playoffs.

The team enters the playoffs with a 35-12 record for the season and the top seed in the team. Central State will be the opposition in the first round of the double elimination tournament. Other teams competing for the District Nine championship are Phillips University and Southwestern State University.

Savage coach Mike Metheny said that the two teams have a good chance of advancing to the next round.

Soccer Players In OIC Season

by Tom Fronterhouse SOSU Soccer coach, Jorge Morales, announced his first year's participation in the OIC soccer tournament.

The official fall soccer team is open to all students at Southeastern, and Morales said the new official team is not a team made up entirely of international students, but it is open to all men students who are interested in soccer.

Anyone interested in trying out for the fall soccer team should contact Mr. [Name] Extension 206.

men h. "We've year that Hudson. In the coached by Doug Murray andmond Wright. In the double defeated by Jrc and Chuck Weber homa Baptist Univ. Reisman comments he wasn't sure how the players had lead during the year. "I don't know how well we would because at the beginning of the season"

Savages

Cagers Drop Two; Win One

Savage cagers travelled to Dallas Monday night and dropped a close one 75-73, after leading 29-26 at half-time.

Rodgers pulled down 11 rebounds to take high honors in that department. "We're going to have to begin each game with more intensity and get into the game sooner," says Hadden.

Lonsbury Name Recruits 13

by Tom Fronterhouse Dan Loonsbury, originally from Dexter, New York and a graduate of the University of Arkansas, was named head coach in December. The former offensive back-cutting horse field coach has been on the Southeastern football staff for the past three years.

Plans for the recent recruitment of 13 members of the football team who live with new football players who after the week transferred here from other universities.

SAVAGES

Jeff Baugus—Junior
Oklahoma City, OK

Barry Bowker—Junior
Ardmore, OK

Bill Brady—Freshman
Healdton, OK



Chris Brown—Junior
Octavia, OK

Jimmy Brown—Freshman
Roff, OK

Wade Compton—Freshman
Del City, OK

Jackie Cumbie—Graduate
Ardmore, OK

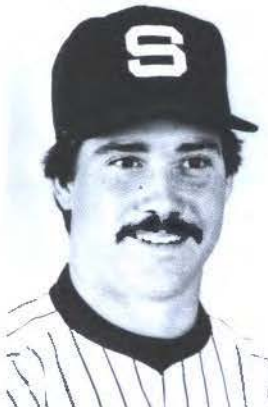


Martin Dean—Senior
Oklahoma City, OK

Lane Decker—Junior
Bethany, OK

Tom Dutton—Senior
Tulsa, OK

John Haines—Sophomore
Sulphur, OK



Scott Hayes—Junior
Garland, TX

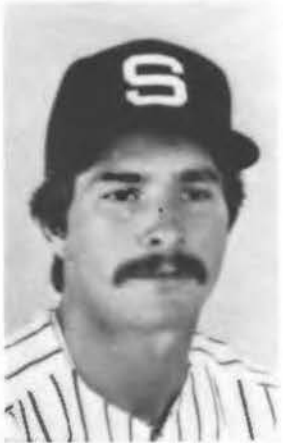
Walter Hawkins—Junior
Oklahoma City, OK

Sam Keeling—Senior
Muskogee, OK

Rick Kirkendoll—Sophomore
Bixby, OK



BASEBALL



Ron Knotts—Senior
Washington, PA

Scott Logsdon—Sophomore
Tulsa, OK

Kevin Ludwick—Sophomore
Duncan, OK



Daniel McDede—Freshman
Fanwood, NJ

Eddie Merklen—Senior
Middleton, NY

Dale O'Neil—Junior
Ponca City, OK

Tim Phelps—Senior
Durant, OK



Jim Polly—Junior
Anadarko, OK

Rusty Ridling—Junior
Sentinel, OK

Clint Ramsey—Sophomore
Durant, OK

Scott Thompson—Senior
Poteau, OK



Martin Ueltschey—Senior
Dallas, TX

Keith Wolfe—Senior
Frederick, OK

Mike Metheny
Head Coach

SAVAGE



BASEBALL





Wayne Bennett—Senior
Houston, TX



Kenny Caffin—Sophomore
Trumann, AR



Jack Hedden
Head Coach



Mike Converse—Freshman
Durant, OK



Brian Craig—Senior
Houston, TX



Lon Reisman
Assistant Coach



Al Errico—Junior
Calera, OK



Thomas Davis—Freshman
Savanna, OK

BASKETBALL



Shawn Gills—Freshman
Saginaw, MI



Myles Homer—Sophomore
Ardmore, OK



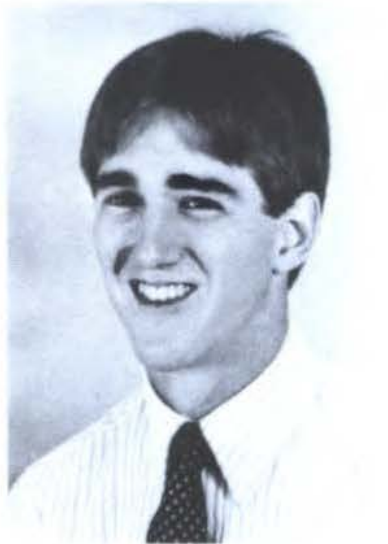
Dennis Rodman—Sophomore
Dallas, TX



Darnell Shanklin—Junior
Hugo, OK



Harry Spivey—Senior
Grand Prairie, TX



Phil Stephens—Junior
McAlester, OK



Gerald West—Sophomore
Grand Prairie, TX

SAVAGES ON

T

Dennis (Worm) Rodman, top right, muscled a shot in as Harry Spivey, Myles Homer and Brian Craig look on. Middle left, Harry Spivey, Myles Homer and Darnell Shanklin get into rebounding position. Mike Converse, middle right, puts up a jump shot as Thomas Davis and Kenny Chaffin get into position. Bottom left—Rodman takes the ball to the hoop past two would be defenders. As Mike Converse and Thomas Davis get ready to rebound, Kenny Chaffin, bottom right, goes up for two points.



THE WARPATH



Darnell Shanklin fights for rebounding position while Myles Homer, top right, takes a long jump shot. Dennis Rodman, top right, grimaces as he reaches for a rebound. Bottom left, Rodman prepares to slam the ball through the hoop. Harry Spivey, bottom middle, is fouled as he shoots over a Ranger. Phil Stevens, bottom right, penetrates the middle and tries to score over the outstretched hand of an opponent.



SAVAGETTE



Vicki Coffey—Junior
Oklahoma City, OK



Karla Fogelberg—Sophomore
Honey Grove, TX



Freda Manous—Sophomore
Antlers, OK



Gloria Oliver—Sophomore
Macomb, OK



Anita Walker—Junior
Ada, OK

19



Teri Worsham—Freshman
Elmore City, OK



Tracy Grant—Freshman
Smithville, OK



Kelly Harper—Freshman
Plainview, OK

BASKETBALL



Debra Manley—Senior
Comanche, OK



Shannon Shipp—Freshman
Kingston, OK



Marla Smith—Senior
Kingston, OK

84



Cindy Lee—Senior
Mounds, OK



Kim Phillips—Freshman
Bokchito, OK



Dena Potter
Assistant Coach



Sharla Medders
Manager



Nick Keith
Head Coach

IN MEMORY OF

TRACY GRANT



March 23, 1965
February 9, 1984

We dedicate this section to the memory of Tracy Grant. Tracy loved the game and all her teammates. She will live forever in the hearts and minds of all who knew her.



SAVAGETTES IN ACTION



Kay Brown (top left) shoots from close in as her teammates position themselves for a possible rebound. Debbie Manley (top right) passes the ball to Kay Brown as Karla Fogleberg looks on from the base line. Karla Fogleberg (bottom left) fights for rebounding position under the basket against a Texas Women's University player. Debbie Manley (bottom right) shoots her favorite jump shot.



SAVAGE

Troy Barner
Ted Baumann
Tim Belcher
Mark Blanton
William Bolt



Lon Boyce
Doug Boydston
Johnny Broyles
Daryl Buck
Tom Burdette



Kevin Carter
Derrion Castleberry
Asa Chambless
Robert Clark
Bryan Clay



Donny Cogswell
Jim Comstock
Kent Davis
Ricky Dismuke
Rory Durham



Chuck Easley
Kevin Garrett
Rayce Guess
Keith Hall
Efrem Hamilton



Jay Harvey
Jeffery Hill
Kevin Hill
Grey Hopper
Charles Johnson



FOOTBALL



Philip Koons
Kim Ligon
Tom McCean
Micky Marsh
Bryan Mattox



Duane Merideth
Don Mullenix
R.L. Murray
Billy Nisuanger
Jeff Nye



Danny Odom
Paul Olinger
Gary Ramsay
Lee Ross
Hal Showalter



Wendell Simpson
Paul Smith
Philip Templeton
David Thomas
Kelvin Thomas



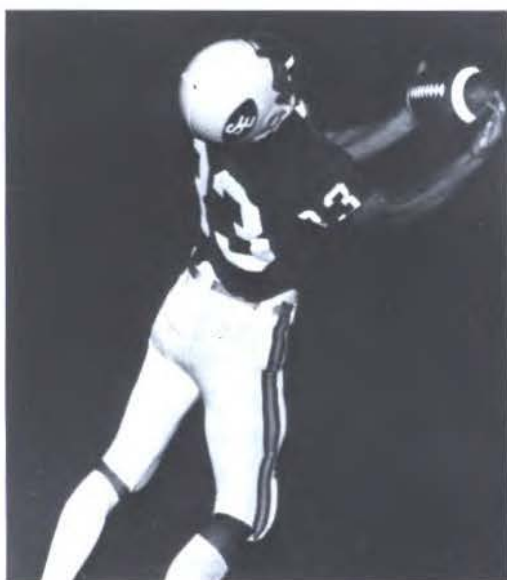
Daniel Veazey
John Walker
Shannon Watts
Ronnie William
Steve Williams



Dan Lounsbury, Head Coach
Ed Jones, Assistant Coach
Ed Noltner, Assistant Coach
Mike Shea, Assistant Coach
Glennis Ring, Graduate Assistant

SAVAGE

1) Paul Smith fights for extra yardage (top right). 2) Kent Daves jumps high for a pass reception (center left). 3) Rayce Guess breaks a long run for the Savages (center right). 4) Don Mullenix is receiving attention from the trainer Donny Raley (bottom left). 5) Eluding a potential tackler is Savage tightend Tim Van Orsdol (bottom right).

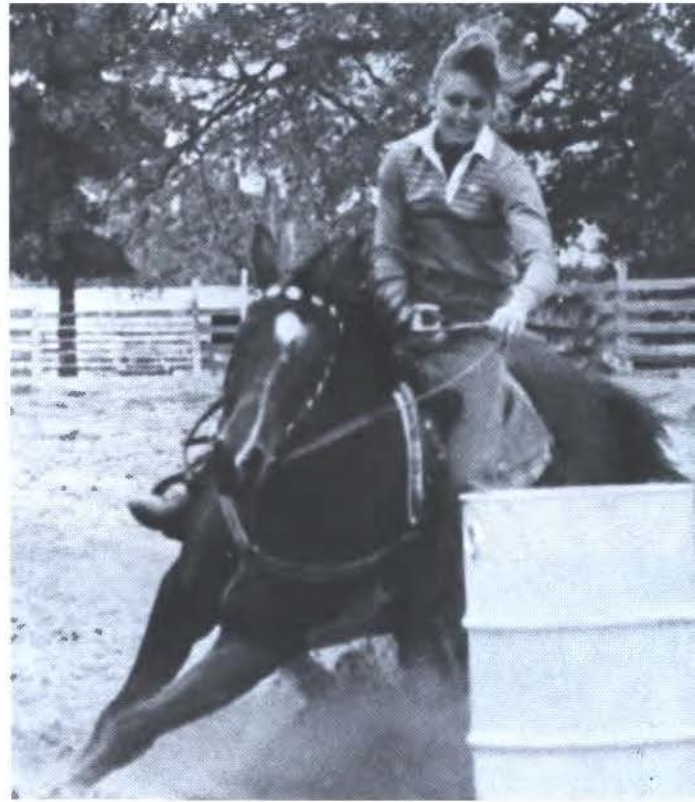


FOOTBALL



1) Freshman Joe Hisaw rallies behind teammates (top left). 2) Water girls posed on the sidelines (center left). 3) Hal Showalter boots the punt (center right.) 4) Runningback Sam Loucks is brought down after a short gain (bottom left). 5) Quarterback Billy Brown passes for a possible completion (bottom right).



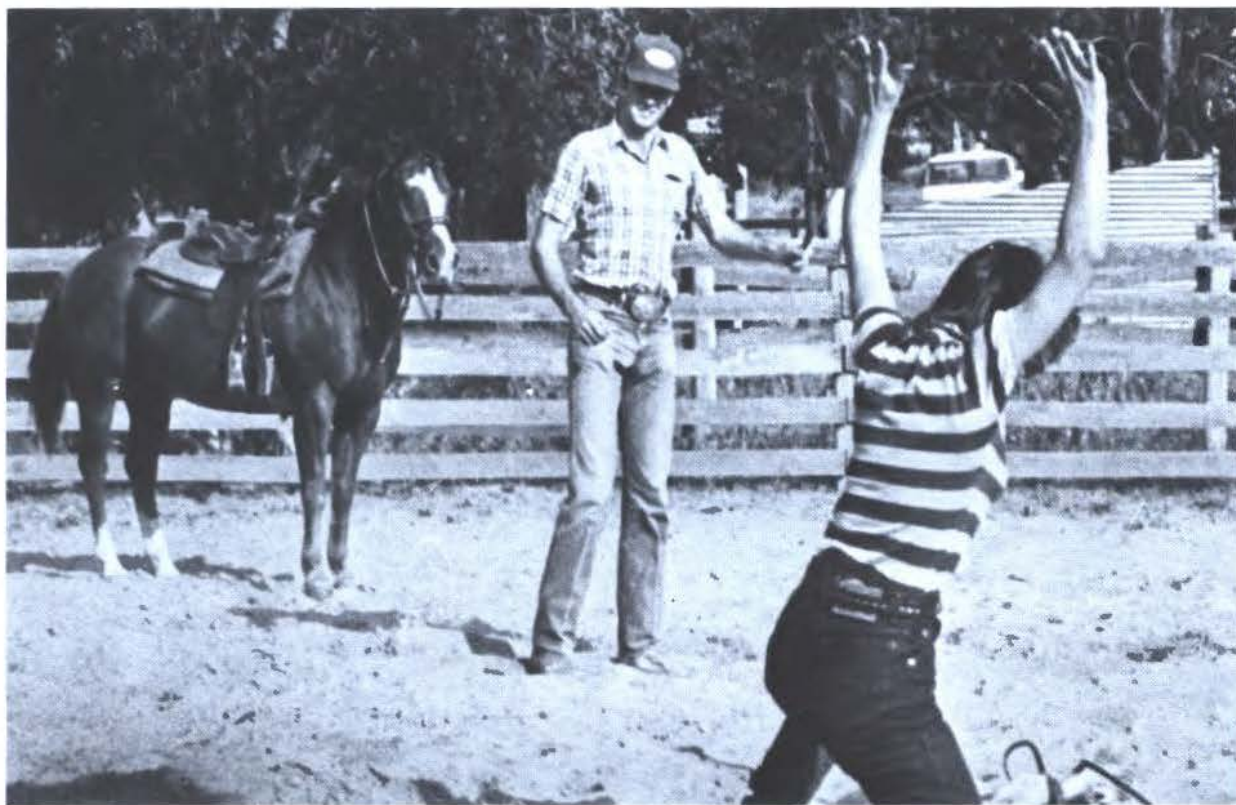


Left Back row—Wayne Carter, President; Jim Hodge, Louis Robinson, Forest Perryman, secretary-treasurer; Brad Weger, Becky Wade, Doug Anteau, Tom McClure, vice-president.

Left, Front Row—Cindy Hopkins, Brenda Stanford, Michelle Mullens, Lou Ann Linney.



RODEO CLUB

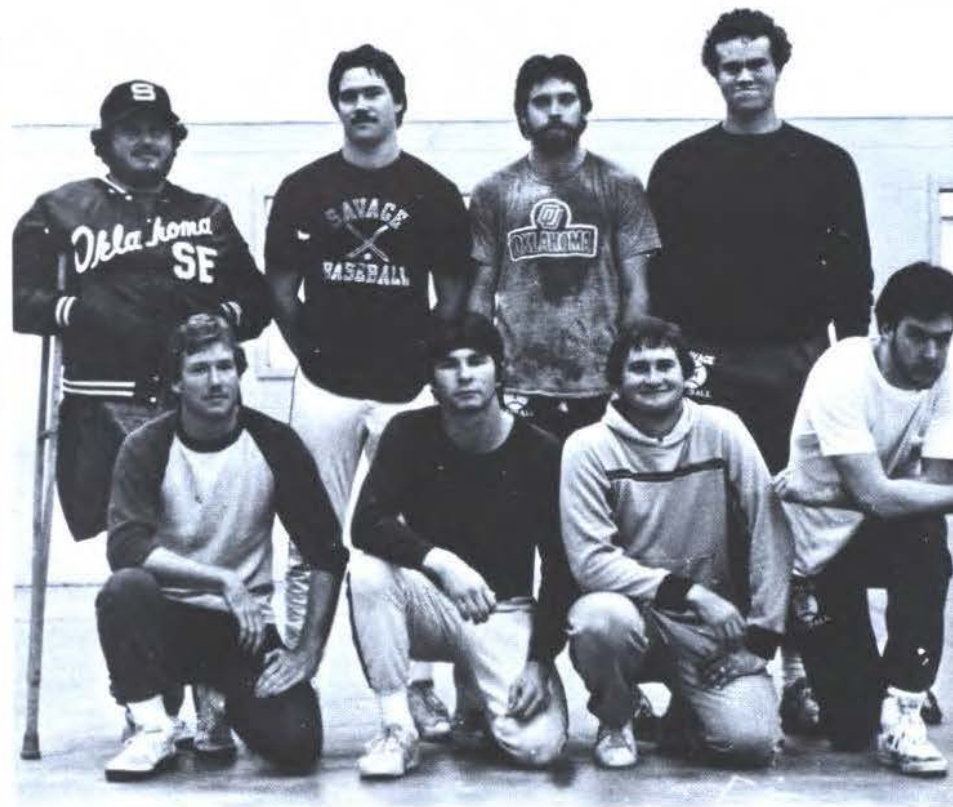


INTRAMURAL

Intramural sports play an important part of the sports program at SOSU. This type of program attracts the majority of the students who are not in an organized sport.

Coach Mike Metheny does a good job of sponsoring and planning the intramural program.

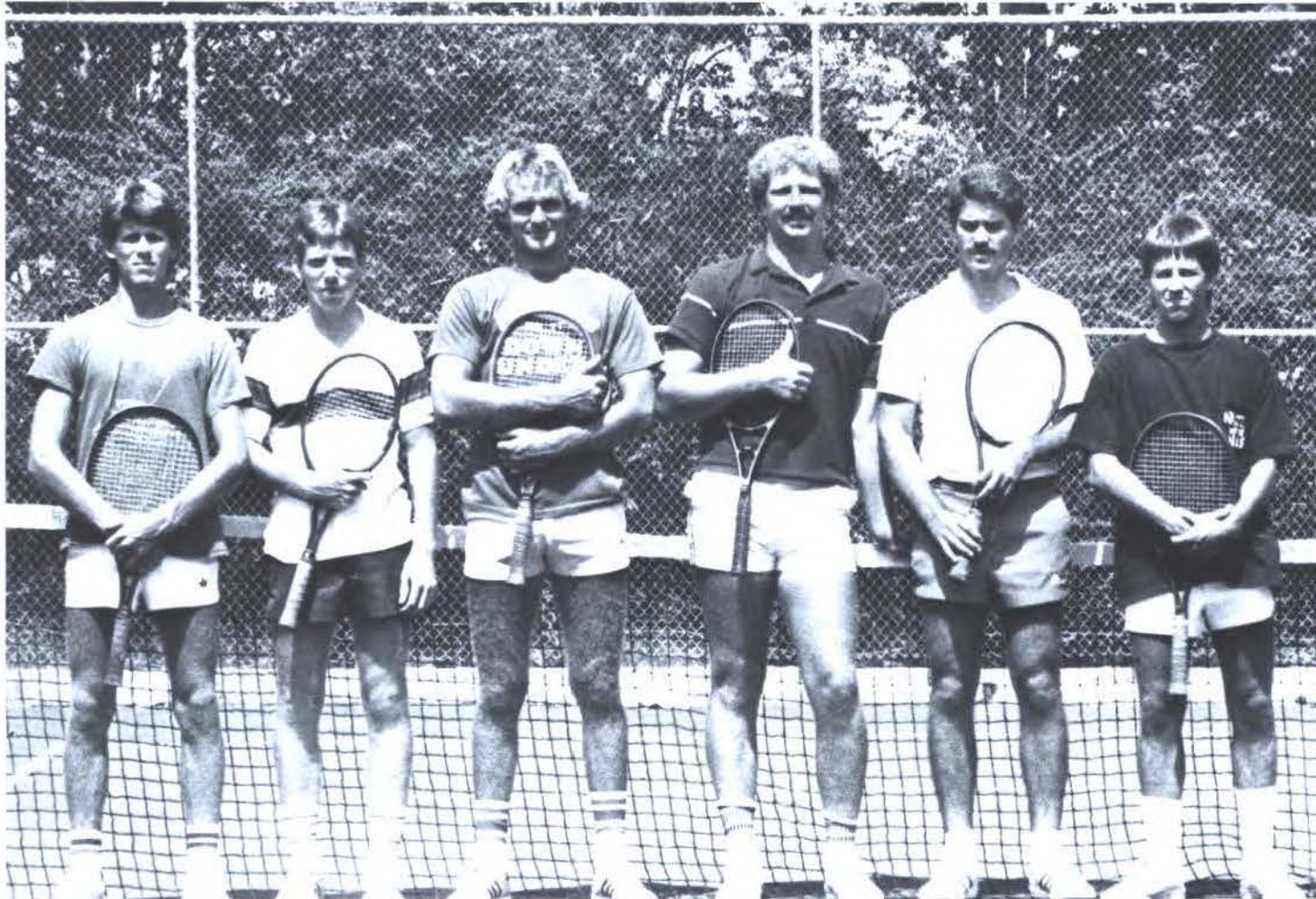
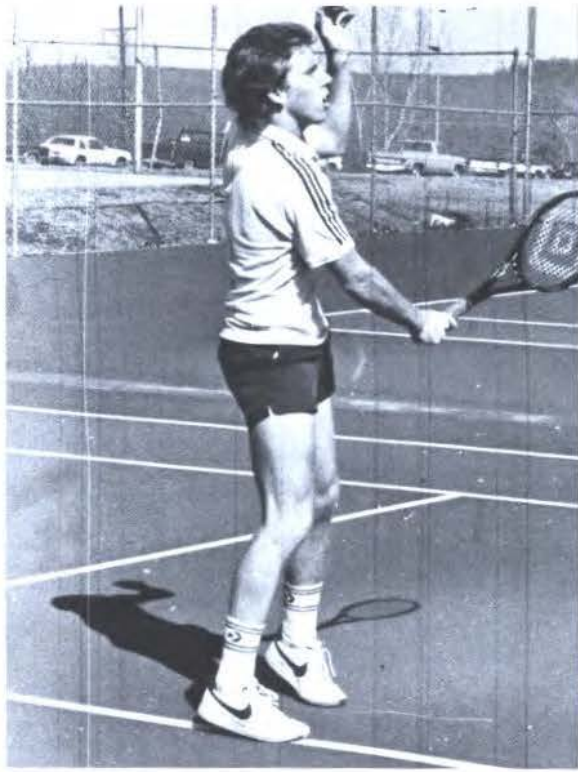
The program consists of football, volleyball, soccer, tennis, racquetball, basketball, softball and ping pong. The programs are open to all men and women on campus.



SPORTS



SAVAGE MEN'S TENNIS



GREEKS

Delta Chi Goes National

by Tom Fronterhouse
 Dr. Jim Harmon, sponsor and faculty advisor of social fraternity, Delta Chi Delta, announced today that the fraternity voted unanimously at their last meeting to seek national affiliation. Delta Chi has previously been the only local fraternity in the state, and has been active in the Southeastern area in the past.

added Harmon. The new fraternity colors are purple and gold.

Mike Despain, student, is president. Lee Johnson is vice president.

the advantages for a national affiliation help in the long run.

long trip. I have to be up to 40 miles a week before long. The team members will alternate rolling the keg and running during the night. They will stay in hotels and have been reserved.

THE Member Chosen For National Keg Roll

by Steve Frost
 Bill Wright, Tau Kappa Epsilon member, has taken part in the national IKE Keg Roll. The keg roll is a money raising activity to benefit the St. Jude Children's Research Hospital. Wright is one of five chosen to take part in the venture. The team will travel to Minneapolis, Minn., on October 12 and travel 2,400 miles in a 10 wheel trailer. The team will raise money from pledges and donations that will be received in the form of a keg roll.

Research hospital located in Memphis, Tennessee. Wright, originally from Garrison, S.D., is a senior majoring in recreation and resource management. He says this keg roll is a once in a life time opportunity. "The running is the easiest part," said Wright. "The hard part is raising the money. The funds we raise come from pledges and donations that will be received in the form of a keg roll."

Challenging Organizations Alpha Taus Make

Success after several schoolmates who had served as counsellors in the summer became a challenge for the Alpha Sigma Tau sorority. They will make at least one mentally handicapped youngster "mighty" happy this summer because of a \$120,000 project to raise money for the project.

Interfraternity Council Schedules Rush Week

by Michael Davis
 The Interfraternity Council held its first meeting August 30 to decide when during Rush week the fraternities will hold their rush parties. Rush will be next September 12. The Interfraternity Council is composed of two fraternities from each school. They govern the policies as to how the activities are to be carried out. The rush parties are to be held away from the campus. The rush parties are to be held away from the campus. The rush parties are to be held away from the campus.

Zeta Phi Beta Reorganizes; Rush Activities Underway

Zeta Phi Beta is a black women sorority here on the campus. It was reorganized March of '83. The rush parties are to be held away from the campus. The rush parties are to be held away from the campus.

Miss AASU pageant and several other activities, although no dates have been planned. "With the help of Dean other sororities on campus and the women on campus, the rush parties are to be held away from the campus. The rush parties are to be held away from the campus."

THE LITTLE SISTER No. 1

Phi Beta, for women on this campus will be keeping sorority together semester. All women interest Zeta Phi Beta sorority please contact I Banks or Vicki Dot 316 North Hall or Finley, 304 Chic Towers, ext. 434.

Rush Underway

and Delta Chi Delta Delta Chi Delta is a local fraternity, the other three are nationally affiliated organizations. Delta Chi Delta is a local fraternity, the other three are nationally affiliated organizations. Delta Chi Delta is a local fraternity, the other three are nationally affiliated organizations.

Fall Rush Has Begun Activities Begin Monday

by Tom Reynolds
 Rush opened up this year with the "Back To School Party" held last Tuesday in the Ballroom. The party was for any woman interested in participating in a sorority. The Rush Rolls were open Wednesday from 8:00 till 5:00 and Thursday from 10:00 till 5:00.

Sig Tau Nat Officers To Meet In Durant

National directors of Sigma Tau Gamma fraternity are holding their quarterly board meeting at Durant and on Lake Texoma this weekend. Also here are several national officers including Kenneth Hoover, director of the national office.

The local chapter is assisting with arrangements. Mr. Phelps and Mr. Hoover are at the hotel.

SIGMA

Tracy Whited
Pres.



Tammy Hixon
Sec.



Edie Hammock
Treas.

Gail Armstrong



Lisa Bryan



Darla Crous



Charlene Cooper



Launa Gilstrap



Sheila Phillips



Lara Phipps



Peggy Thompson



Julie Whitford



Lisa Woody



Jalene Sayers



KAPPA



Officers: (left to right) first row—Edie Hammock, Tammye Hixon, Charlene Cooper, Tracy Whited. second row—Lisa Bryan, Shelley Miller, Peggy Thompson, Peggy Smith



First row (left to right)—Rebecca Paddock, Tammye Hixon, Edie Hammock, Lisa Bryan, Charlene Cooper, Tracy Whited, Susie Haeber, Laura Dearnbarger, Second row (left to right)—Shelley Miller, Luanna Gilstrap, Lynne Apple, Steve Fuoco (favorite), Sheila Phillips, Peggy Thompson.

TAU KAPPA EPSILON

Lil' Sis Stephanie Sexton, nervously anticipates Little Sister announcements.



TKE Members clowning around in front of the fountain, before announcements.



TKE Members enjoy Toga! Toga! Toga! Front Row left to right: Clay Bartug, Tim Page, Charles Garrett, Larry Partain, Bill Wright, Mike Smith, Second Row: Fred Sanders, Bob Weber, Dave Wright, T. J. McRite, Mike Ridgeway, Mike Price, James James. Third Row: Richard Ballard, Alvin Geotz, Rhonnie Hanie, John Aldridge.



TAU KAPPA EPSILON



TKE Little Sister '83-84. Front Row left to right: Jerri Isch, Stephanie Sexton, Sheila Cooper (TKE Dreamgirl), Mary Lou Wilkins, Donna Davis, Lisa Woody, Lisa Bryan, Laketa Morris, Tammy Buchanan, Penny Pollard. Second Row: Julie Whitford, Kally Hoffman, Lynne Apple, Edie Hammack, Jenne Krone, Tammy Hixon, Shelly Miller.



TKE Members: Front Row left to right: Jeri Isch, Stephanie Sexton, Sheila Cooper, Mary Lou Wilkins, Donna Davis, Lisa Woody, Lisa Bryan, Laketa Morris, Tammy Buchanan, Penny Pollard, Second Row: Julie Whitford, Kaly Hoffman, Lynne Apple, Edie Hammock, Jenne Krone, Tammy Hixon, Shelly Miller, Third Row: Mike Murray, Rick Glapa, Bernard McCrossen, Eddie Behrens (President), Corey Jones, Mike Price, Dave Bacon, Mike Cavender, Fourth Row: Dave Lucas, Rod Milton, Bill Kennedy, Steve Huchens, Brian Childers, Martin Engell.

ZETA PHI BETA

Evette Banks
Pres.



Mary Finley
D.P.

Pledges:
Lonzine Washington
Teresa Huey



Jackie Banks
Not pictured—
Beverly Gardner

Mary Finley
Lonzine Washington
Teresa Huey



Jackie Banks
Evette Banks

ZETA PHI BETA



Ruth Scribner and Mary Finley host the first annual Sophisticated Gent contest.



Evette Banks explains the rules of the contest.



Jerry Stewart escorted by Ruth Scribner is the 83-84 Sophisticated Gent.



Antonio Spencer escorted by Jackie Banks is one of the runners-up.

PHI SIGMA EPSILON

OFFICERS: (back) Pery Owens, Eric Kuykendall, Jay Silver, Paul Smith (front) Kirk Crusoe, Mike Reddick, Greg Hopper, Mike Kennedy, Mitch McDaniel.



MEMBERS: (back) Jim O'Dell, Clayton Cooper, Donny Lewis, Mike Reddick, Jay Silver, Joey Devalt, Mike Kennedy, Eric Kuykendall, Mark Pate, Jeff Nye, Don Underwood, Kerry Robinson, Marty Acker. (front) Kevin Scott, Jack Keilberg, Mark Linney, Donny Coggsell, Pery Owens, Greg Hopper, Larry Cook, Dean Frazier, Garry Rind, Mitch McDaniel, Kirk Crusoe. (kneeling) Hal Showalter, Mark Riffe, Paul Smith.

PHI SIGMA EPSILON



LITTLE SISTERS: (back) Sheila Phillips, Terrie Cook, Patti Brown, Lou Ann Worsham, Tammy Jefferson, Gail Armstrong, Pam Hart, Geania Bledsoe, Kelly Clark, Kim Smith, Susan Robison, Lou Ann Linney. (front) Tara Osborne, Cissy Crusoe, Jackie Young, Sandra Mercer, Nina Short, Shelly Morris, Lisa Davis, Michelle Majors, Laura Dearnbarger, Lara Beth Phipps, Pallin Straight, Debbie Watkins, Shannon O'Dell, Tricia Mellencamp, Lisa Frazier, Toni Reynolds, Lori Linney.



PLEDGES: (back) Mike Reddick, Paul Kincaid, Chibby, Ky Smith, Brian Hart, Jimmy Allen, Mark Sipe, Kirk Crusoe. (front) Perry Owens, Bret Carr, Tim Laughlin, Larry Cavender, Mike Wilson, Willie Whitmire, Ricky Nelson.

SIGMA PI

Susie Haber, Johnny Crabtree and Cindey Crabtree pose for a picture at the Sigma Pi Rush Party. Bottom picture: Sigma Pi Little Sisters offer a warm greeting for Andy Morris, Executive National Director, who attended the Rush Party. The director held an executive session to discuss housing plans and to offer leadership training to the officers.



ADMINISTRATION

Opera Successful

Pedraza Performs In Tex

Give Pablo Pedraza an inch and he'll load your entertainment boat.

The voice professor gave a voice recital last year in deep west Texas. The folks in Uvalde like it, and this month asked him to bring a contingent from this SOSU Opera Theatre.

That performance also rang a bell; now they want him to bring a complete opera performance.

Uvalde is a community of about 15,000.

big population center.

The people take their entertainment seriously: Uvalde has its own Grand Opera House, an Arts Council, music clubs.

It was the Opera House where Pedraza and his carload of voice students performed. The group included Debra Rains and Tammy Buchanan of Durant, LeAnn Harless of Soper, Johnny Smithson of Haworth and Roland Burks of Hugo.

"Rigoletto" and "The Marriage of Figaro" all in costume finished the ever recital of sacred music.

Pedraza's Opera group is a main campus entertainment addition to the teaching voice directs SOSU's singers.

The Texas Opera Society first for the Opera an invitation to from Dur...

Mansur Due For Austrian Lecture

Dr. Paul Mansur will spend a week in Vienna, Austria, later this month at a meeting expected to draw many of the world's top hornists--French Horn players.

Mansur, chairman of the music department, will lecture on the history of horn ensembles in the United States, in conjunction with the Marvin McCoy Horn Ensemble of Minneapolis.

He will be the official representative of the International Horn Society, which he serves as publication editor.

The event is the 100th anniversary of the Wiener Walkhorn Verein, one of the oldest music clubs whose membership is composed of distinguished...

ference, Congressman Wes Watkins and Senator Don Nickles.

They will be presented to the group's president, Siegfried Schwarzl.

The week will be devoted to talks, seminars, concerts and exhibitions by hornists from the U.S., Germany, Austria, Belgium, Norway, Czechoslovakia, Hungary, Great Britain, France and Israel.

by Sharla Frost

Sauri and Ananta Acharya have been named fellowships by the Endowment in...

summer in Yale and Harvard,

Fellowships Go To Bhattacharyas

Interests Through Neorealism: India's Foreign Policy in the Nehru Era, and of numerous articles on international political policy which have been published by such journals

perfectionist. That way you always have something to achieve."

In keeping with this philosophy...

area of religion. "I did not intend to become involved in religion, but I suppose God wanted me to," said...

Lounsbury Appointed Head Coach Appoints Three New Assistant

Dan Lounsbury has been named head coach for the Savage football team...

Coaching

Prof Honored

Dr. Elbert Hill, Professor of English, has been awarded a fellowship to attend a June 20-August 12 institute in children's literature at the University of Connecticut.

Hill will receive a \$2,500 fellowship to help in defraying expenses. He will participate in lectures, activities relating to literature, and classroom in the field of children's literature.

Ph.D

Hill Gets Fellowship

Last year he served as the President of the South Central Modern Language Association in the section of Science Fiction and Fantasy. He is campus coordinator of the greatest...

Risso Cites Shakespeare

Her project for the summer seminar will center around the meaning of freedom in philosophy. She has several different papers...

deals with rival children's literature at the time when Lewis Carroll published his classic, Alice in Wonderland.

"I am looking forward to this summer in keeping with this philosophy..."

Tom Frontlerhouse

There is a world of difference between Taiwan and the Republic of China. But they are remarkably alike in many ways. The impressions of five American Administrators are the can Association through the Officially, they were the Officers and Ministers of State. On how to improve the quality of higher education in the US and the government's role in education. There are many ways to improve the quality of higher education in the US and the government's role in education. There are many ways to improve the quality of higher education in the US and the government's role in education.

Hibbs Views Taiwan as Nation of Contrasts

Hill Gets Fellowship

Hill Gets Fellowship

Hill Gets Fellowship

Hill Gets Fellowship

PRESIDENT HIBBS

Dr. Leon Hibbs has been President of Southeastern Oklahoma State University for the past 16 years. During this time, he has seen many changes in the University and in the students. President Hibbs maintains an open door policy to the students and faculty. He is an active supporter of the Rodeo Team, and is a visible person on campus.



(Middle right) Recipient of a \$750 memorial scholarship named for Wyatt and Mattie Jeltz is Jacqueline Jones; she is receiving her check from President Hibbs. President and Mrs. Hibbs pause at the Hall of Fame Banquet for a snapshot. Bottom right, Dr. Hibbs and secretary, Pat Norris look at the agenda for the day.



FACULTY

Abbott, Billye
Abner, Annie
Adams, Benjamin M.
Adams, Claude R.
Akins, Suzanne
Allen, Bill
Allen, Maggie
Anderson, Jan
Andrews, Charles R.
Andrews, Doris M.
Arnold, Rose Ann
Ashcraft, M.G. "Rock"
Ashton, Kirk
Ashton, Liz A.
Ball, Lee
Barker, Laura L.
Barker, Lewis L.
Barnette, James Y.
Baskin, Vlasta J.
Bass, Linda S.
Bauer, Louise
Beaird, Geneva
Beals, Retha
Bhattacharya, Sauri P.
Bigham, Jo Ann
Bigham, Sam R.
Black, M. Irene
Boatner, Winona
Bostic, Doyle L.
Bostic, Maryl Louise
Bowen, Collin W.
Bowen, Ruby L.
Boynton, Edwin C.
Breeden, George
Breeden, Linda
Britt, Patricia C.
Britt, Walter C.
Britton, James E.
Brown, Susan H.
Buchanan, Gerald D.
Burnell, Jimmie B.
Byrd, Edward L.
Caluette, Shirley B.
Campbell, Margie R.
Carroll, Johnny G.
Cartwright, Betty
Castleberry, Mary Ann
Cathey, Juliet
Cazzelle, Jack G.
Chappell, Ben A.
Chinn, Kenneth L.
Clark, Lahoma E.
Clark, Sally Jo
Coats, Carol E.
Cockerell, G.M.
Cockerell, Patricia M.
Coker, Clydeane
Collier, Donald D.
Collier, George A.
Cooper, Betty Gayle
Corbin, Bill W.
Corbin, Rebecca K.
Cornellison, Joyce
Coston, F. Wayne
Cotner, Tim C.
Craig, Deborah Ann
Craig, Mary Ann
Crow, Lois T.
Culbreath, Joy
Cunningham, James
DaVault, Angela Gayle
Davis, Darrell
Davis, Dorothy
Davis, Julia Daphne
Davis, Kay C.
Deel, Dickie L.
DeSilva, Janice
Dhane, Judy
Dickson, John
Dilbeck, Beverly
Dill, Sue
Dill, Reba
Dodd, William G.
Dresser, Marilyn
Dunham, Pat
Dunham, Phil
Dunning, Sharon
Dye, Jack
Edwards, Billy L.
Eggleton, Gordon
Elder, Kenneth
Ellis, Richard Barry
Engles, Jeanette
Ferguson, Don P.
Fernandez, Janet
Fisher, Sheila
Fisher, Virginia
Fox, J.B.
Gaither, Billy D.

FACULTY

Gandy, Douglas L.
Garrison, G. David
Gathron, Ernest
Gathron, Marsha
Gecks, John E.
Gold, C. Henry
Gold, Jackye
Goss, Charles W.
Griffith, Evelyn
Grimes, Bill R.
Haddock, Dolphus
Hamilton, Austin L.
Hammock, Charles R.
Harmon, James S.
Harmon, Micheal G.
Hartwell-Whitehead, Jonell
Hawkins, E.F.
Hawkins, W.O.
Hazell, Don B.
Heath, Rim
Hedden, Jack E.
Hedrick, Debra J.
Hemphill, Debra J.
Henderson, Robert A.
Hercher, Gary W.
Hibbs, Leon
Hibbs, R. Max
Hill, Elbert R.
Hooten, Roy H.
Houston, Dora
Hudson, Vicki L.
Hughes, Rowena M.

Hunnicut, Edward W.
Jackson, Chyrel
James, Patricia D.
Jamison, Blanche N.
Jenkins, Fonda Marie
Jenkins, Sidney L.
Johnson, Bruce A.
Johnson, Louis G.
Jones, Syble G.
Kahrs, Catherine R.
Keenan, Douglas
Keith, Nick
Kilpatrick, Earl B.
Krattinger, John T.
Kutait, Kemal E.
Kutait, Lisa G.
Lambert, Becky
Landua, Dwight
Latham, James H.
Latham, Martha Ann
Laycock, Dorothy S.
Lester, James E.
Letts, Billie
Letts, Dennis
Levins, Sandra Sue
Littlejohn, Joseph E.
Lounsbury, Daniel Charles
Lowry, Herbert
Lucas, Gerry L.
Lynn, Joyce
Lyons, John E.
Mabry, Carolyn S.
Mabry, Joseph G.

Mangrum, C.W.
Manley, Rudy H.
Manners, Bill
Mansur, Paul M.
Martin, Cleo
Martin, Jimmy H.
Martin, Pierce J.
Massey, Marian
Massey, Odes R.
May, Dennis
McClendon, Max J.
McCoy, Carl
McCoy-Fox, Edwardin
McElroy-Ashcraft, Mer
McGovern, Betty L.
McGovern, Troyce
McKinney, Odessa N.
McNeely, Bonnie Mich
McRorey, Tom J.
McWee, Wayne E.
Meadows, Kathleen
Methany, Mike
Mickle, Fran J.
Milligan, James C.
Minks, Lawrence
Mitchell, James W.
Mize, David G.
Moody, Steven W.
Morales, Jorge
Morales, Marcia E.
Morris, Curtis Micheal
Morris, Katy

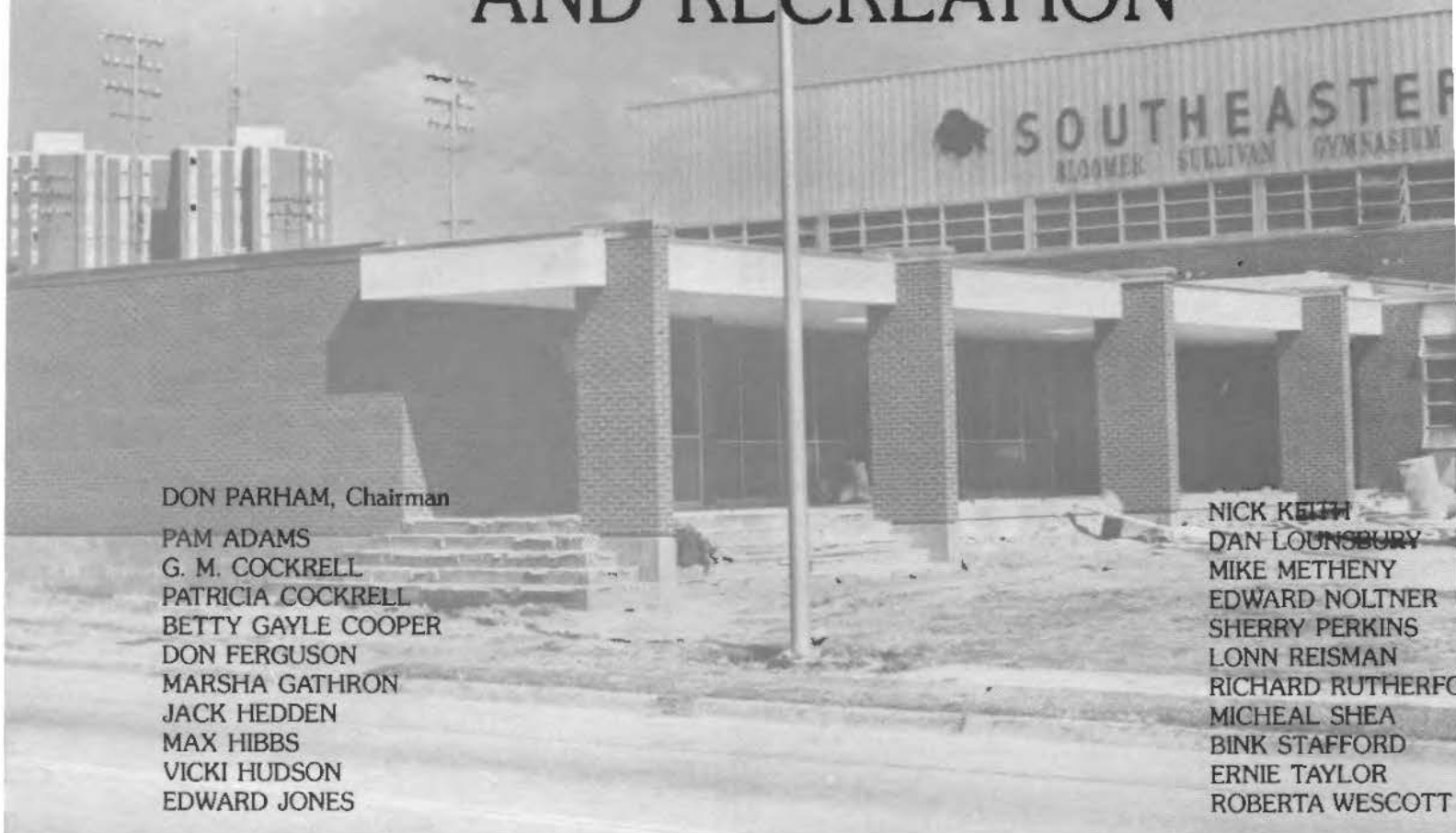
FACULTY

Morton, Bill J.
Morton, Mellodean
Murphy, Elizabeth
Newell, Geneva F.
Newsome, Ron J.
Nolan, Larry R.
Norris, David L.
Norris, Pat
O'Steen, Jimmie D.
Olson, Robert
Parham, Donald A.
Parham, Kay B.
Parker, David C.
Parker, Mark Edward
Pedraza, Pablo F.
Perkins, Sherry L.
Peters, Kenneth V.
Phillips, J.B.
Piller, Raymond
Platter, Allen A.
Platter, Paula P.
Polk, Pamela
Polson, William Jerry
Powers, G. Pat
Powers, Linda Lee
Prough, Dorothy
Rackley, Barbara G.
Radasinovich, Rade
Ray, Barbara
Ray, Bobby
Reeves, Patricia
Refulio, Carlos
Reisman, Lon

Risso, Milly
Robbins, Gene
Robbins, Patricia
Robinson, Jack L.
Rodgers, Jean
Rodgers, Sherry W.
Rutherford, Jennifer
Rutherford, John
Rutherford, Richard M.
Schneider, Harry John
Schulze, Gordon B.
Scott, Leon
Scott, Michael L.
Sills, Eloise M.
Silver, Dorothy S.
Skinner, Gladys
Slack, Katie Frank
Smith, John T.
Smith, M.G.
Stafford, Bink
Starks, Howard
Steele, Linda R.
Stege, Kenneth
Sterling, Shauna
Stroup, Fred Jr.
Stubblefield, Patricia
Sturch, Ernest
Stuteville, Claude
Sullivan, Cecil
Takeshorse, Gwen H.
Taylor, Connie
Taylor, Ernie
Taylor, Patreivia

Taylor, John
Thomas, Robert D.
Tuyen, Nguyen D.
Varner, Ann L.
Varner, Gary J.
Vickers, Thomas E.
Walker, Arnold
Walker, Dovie
Walters, Elizabeth E.
Washburn, Ella
Washburn, Kenneth R.
Watson, Leroy
Watson, Wanda
Weaver, James M.
Webb, Troy A.
Weger, Patricia M.
Wescott, Roberta P.
Wester, Truman
White, Al F.
White, Alvin
Whitmire, Grace
Wiley, Joe
Wiley, Paul
Wilkinson, Richard
Williams, John
Willis, Peggy
Wilson, Evelvyn
Wintle, James
Womack, Sid T.
Work, Hiahwahnah
Wright, Cathryn A.
Wright, John R.
Zumwalt, Glenda

HEALTH, PHYSICAL EDUCATION AND RECREATION



DON PARHAM, Chairman
 PAM ADAMS
 G. M. COCKRELL
 PATRICIA COCKRELL
 BETTY GAYLE COOPER
 DON FERGUSON
 MARSHA GATHRON
 JACK HEDDEN
 MAX HIBBS
 VICKI HUDSON
 EDWARD JONES

NICK KEITH
 DAN LOUNSBURY
 MIKE METHENY
 EDWARD NOLTNER
 SHERRY PERKINS
 LONN REISMAN
 RICHARD RUTHERFORD
 MICHAEL SHEA
 BINK STAFFORD
 ERNIE TAYLOR
 ROBERTA WESCOTT

SAFETY



JAMES CUMMINGHAM
 PAUL WILEY



AVIATION

BILL EDWARDS,
Chairman
LINDA BREEDEN
BILL CORBIN
CHARLES DAVIS
DOUG GANDY
JACK HEDDEN



ED HUNNICUTT
JOHN RUTHERFORD
KENNETH STEGE
PATRICIA WEGER
R.W. TYLER

HOME ECONOMICS

KATHLEEN MEADOWS,
Chairman
WINONA BOATNER
FRAN MICKLE
BARBARA RACKLEY
MARYLIN COLLIER



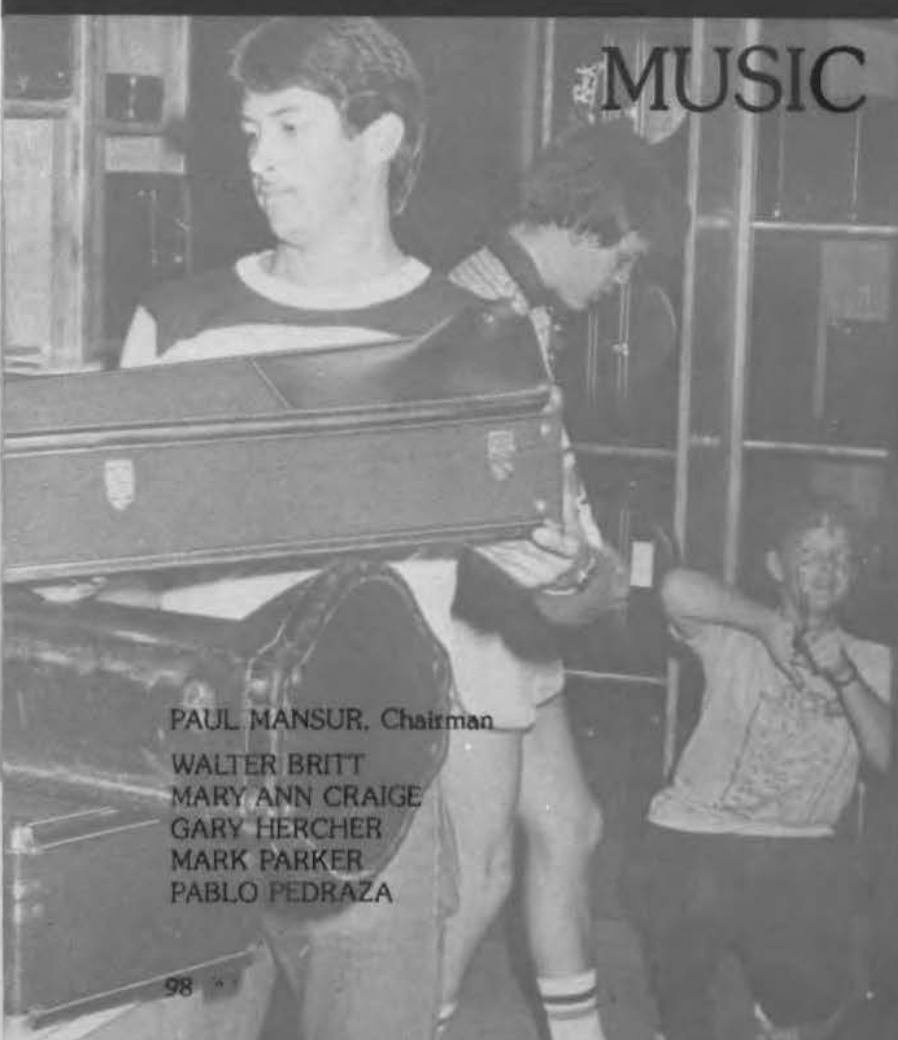
COMMUNICATION AND THEATER




C. W. MANGRUM, Chairman
KIRK ASHTON
BEN CHAPPELL
JULIA DAVIS
CATHERINE KAHRS

RUDY MANLI
MOLLY RISSO
ANN VARNEY
GARY VARNEY

MUSIC

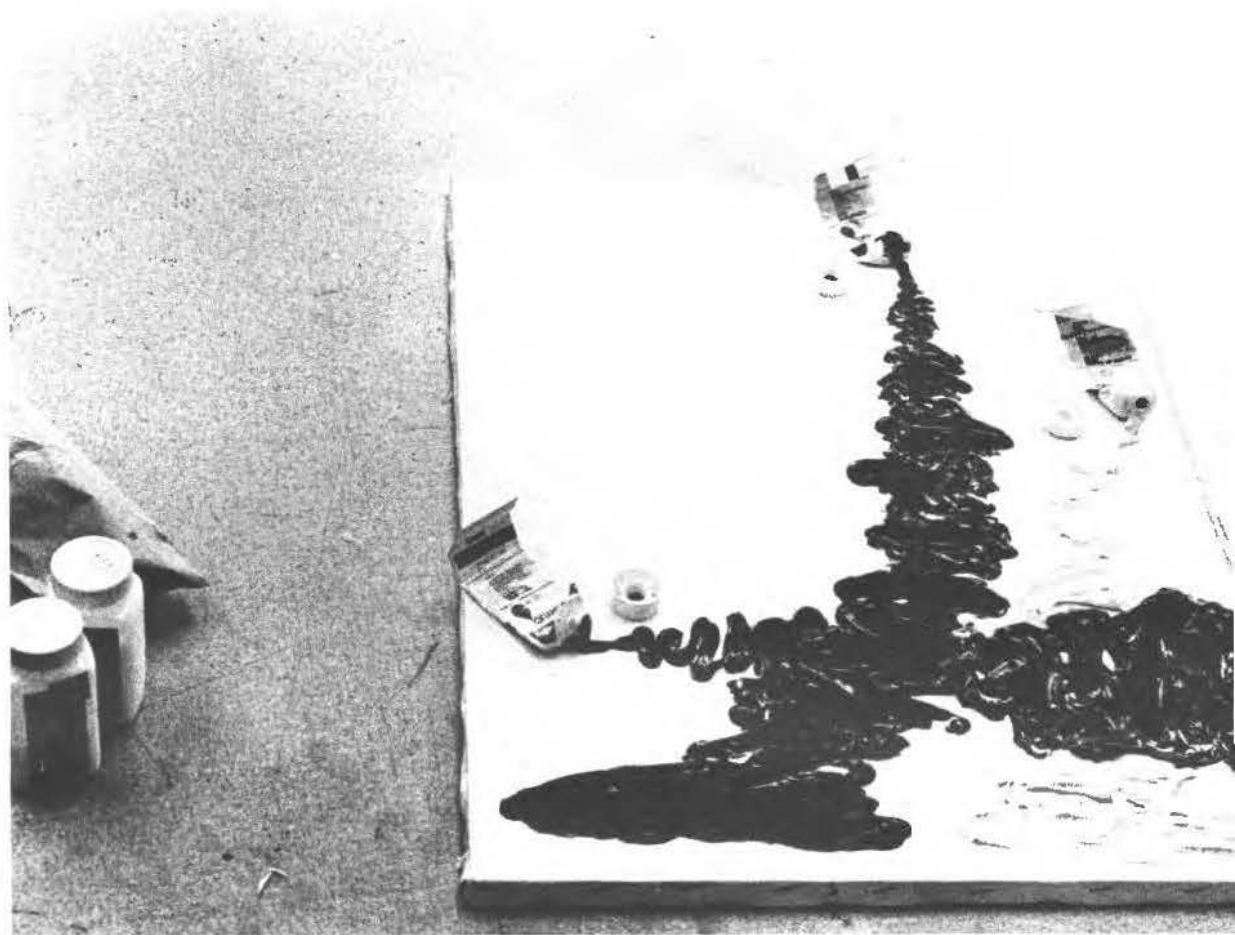


PAUL MANSUR, Chairman
WALTER BRITT
MARY ANN CRAIGE
GARY HERCHER
MARK PARKER
PABLO PEDRAZA



KENNETH PETERSON
ELIOSE SILLS
JAMES WINTLE

ART



ALLEN PLATTER,
Chairman
JAMES BARNETTE
SUSAN BROWN
MAX MCCLENDON

ENGLISH, HUMANITIES, AND LANGUAGE

JOSEPH LITTLEJOHN
Chairman
CLAUDE ADAMS
DORIS ANDREWS
LEE H. BALL
VLASTA BASKIN
ROBERT HENDERSON
ELBERT HILL
DORA HOUSTON
BLANCHE JAMISON



LINDA JONES
BILLIE LETTS
DENNIS LETTS
JORGE MORALES
MARIA MORALES
ROBERT OLSON
HOWARD STARKS
HIAHWAHNAH WORK
GIENNA ANN ZIMWALT

PROFESSIONAL EDUCATION AND PSYCHOLOGY

HAVE YOU HELPED
TO YOU?
AN EDUCATION GIVES YOU
MORE CAREER CHOICES

JOHN GECKS, Chairman

CHARLES ANDREWS

M. G. ASHCRAFT

JACK CAZZELLE

CLINT DILBECK

PHIL DUNHAM

JEANETTE ENGLES

J. B. FOX

CHERYL JACKSON

SANDRA LEVINS

JAMES MITCHELL

DOVIE WALKER

ELEMENTARY EDUCATION

ELEMENTARY EDUCATION



What's
Karma Up?

Elementary Education
Seminar

November 12-13

EDWARDINE McCOY - FOX, Chairman

JOYCE CORNELISON

PAT DUNHAM

MERLE McELROY-ASHCRAFT

BETTY McGOVERN

DOROTHY SILVER

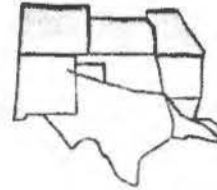
Final
Examinations
December 12-15

Commencement

December 16
9:00 p.m.
Auditorium Building

SOCIAL SCIENCES

SOCIAL SCIENCES



RED RIVER VALLEY HISTORICAL ASSOCIATION



SOCIAL SCIENCE

LOUIS JOHNSON,
Chairman
SAURI BHATTACHARYA
EDWARD BYRD
JOHN DICKSON
DAVID GARRISON
CHARLES GOSS
BRUCE JOHNSON
DAVID NORRIS
JAMES MILLIGAN
RADE RADASINOVICH

SOCIOLOGY



DWIGHT LANDAU,
Chairman
ANGELA DEVAULT
KEN ELDER
JANE ELDER
PHIL KIRK
JOE MABRY

COMPUTER SCIENCE



JOE WILEY,
Chairman
J.W. BENHAM
JOHNNY CARROLL
MIKE MORRIS
JIM O'STEEN
JENNIFER RUTHERFORD

MATHEMATICS



BILL GRIMES,
Chairman
MIKE ADAMS
DOYLE BOSTIC
JIMMY MARTIN
PAULA PLATTER
FRED STROUP
TRUMAN WESTER

BIOLOGICAL SCIENCES

EARL KILPATRICK,
Chairman
SAM BIGHAM
DON HAZEL
JAMES LESTER
CONNIE TAYLOR
JOHN TAYLOR



PHYSICAL SCIENCES

ARNOLD WALKER,
Chairman
LEWIS BARKER
DONALD COLLIER
GORDON EGGLETON
PAT JAMES
JERRY POLSON
JACK ROBINSON
JOHN WRIGHT



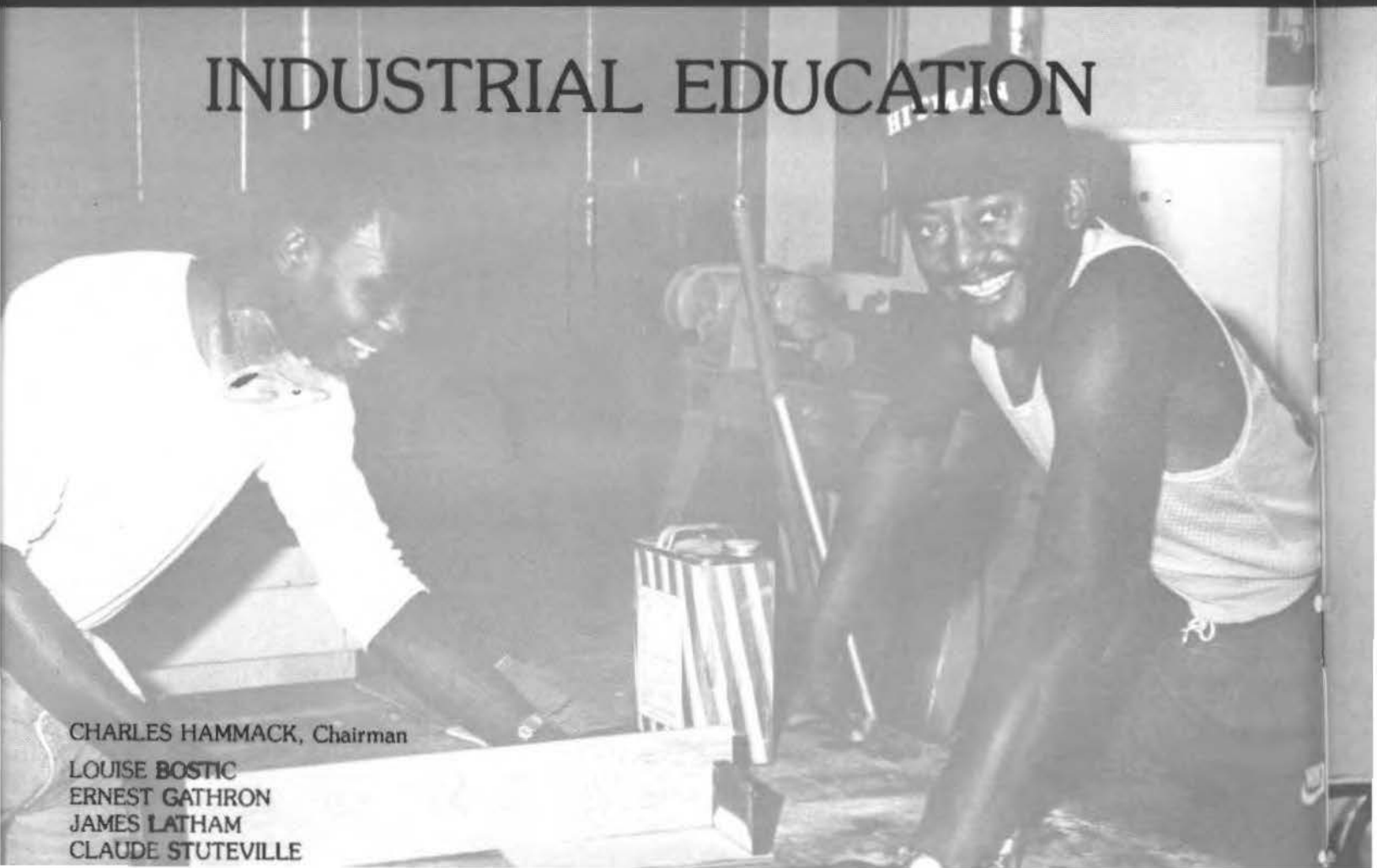
ELECTRONICS



KENNETH WASHBURN, Chairman

- JAMES BRITTON
- DOUG KEENAN
- LARRY NOLAN

INDUSTRIAL EDUCATION



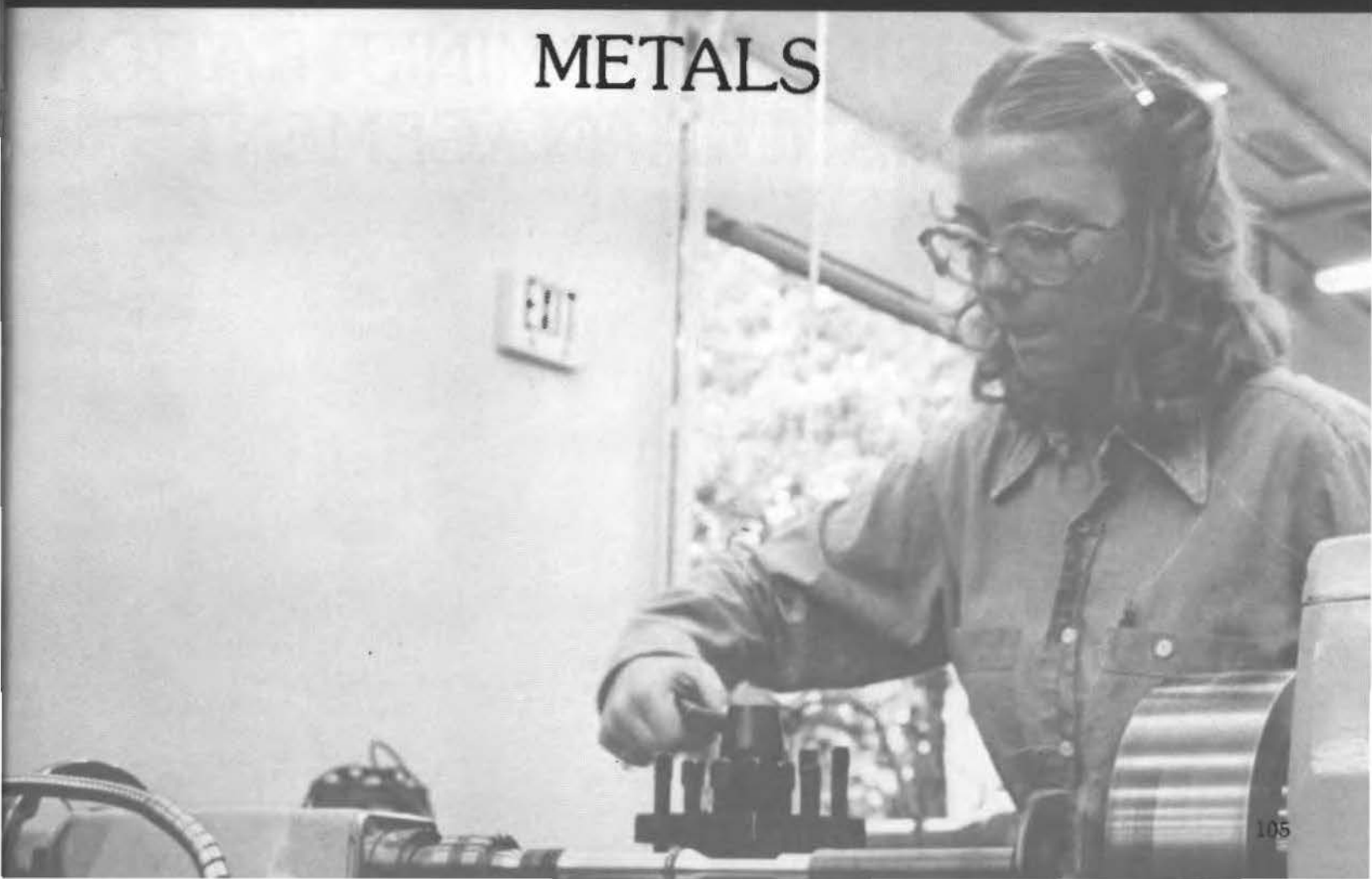
CHARLES HAMMACK, Chairman

- LOUISE BOSTIC
- ERNEST GATHRON
- JAMES LATHAM
- CLAUDE STUTEVILLE

INDUSTRIAL TECHNOLOGY



METALS



ACCOUNTING



AUSTIN HAMILTON,
Chairman
DOLPHUS HADDOCK
CARL McCOY
ELIZABETH NOLAN
TOM VICKERS

BUSINESS ADMINISTRATION AND MANAGEMENT



JACK DYE,
Chairman
MARILYN DRESSER
RICHARD ELLIS
JACKYE GOLD
WAYNE McWEE
LARRY MINKS
LLOYD MILLER
STEVE MOODY
PAM POLK
PATRICIA STUBBLEFIELD

BUSINESS EDUCATION



LOIS CROW,
Chairman
RUBY BOWEN
SYBLE JONES
PATRICIA ROBBINS
CATHRYN WRIGHT

ECONOMICS



SIDNEY JENKINS,
Chairman
KENNETH CHIN
GEORGE COLLIER
ROY HOOTEN

HIGH SCHOOL RELATIONS AND CONTINUOUS EDUCATION, ENROLLMENT CENTER

High School Relations and Continuous Education help in planning for high school students to attend college and people wanting to continue their education.

Gene Robbins heads the high school relations office and Geneva Beard assists him in sending mail to prospective students, with help from many of the student workers like Mindy Worsham at right.



Marian Massey, Mike Harmon and Geneva Newell take care of the continuous education department.

The Enrollment Center processes your enrollment cards, while keeping up with open and closed classes. Lisa Kutait is Director of Enrollment. Some of the Student Workers are pictured at right, Kay Corbin, Julie Wiley and Cindy Hodges.

REGISTRAR AND PLACEMENT



Students enrollments are processed and sent to the Registrar to be made a part of the permanent records. The Registrar takes the responsibility of recording and distributing grades to the student. The placement office helps graduating students look for jobs. The women put prospective employers with job-seeking students for interviews.

Virginia Fisher (top left) is in charge of placement office. Wanda Watson, Traci Toney, Mary Castleberry is in charge of the Registrar office. Suzzane Akins, Jonell Whitehead, Michelle Solomah, Dee Dee Griffin, Anita Barnette, Nina Short, Velma Winnett.



STUDENT AID AND

The place to go for financial help is the "Student Aid Office". Financial aid may be a scholarship, grant, loan or work study. Sherry Rodgers, Director of Student Aid, supervises financial aid, disbursements and sets up special arrangements for students in need.



The office personnel handles the applications, forms, and problems that occur for students who wish to apply for financial aid. They are (from left to right) Richelle Ackery, Susan Cooke, Debbie Craige and Sherry Rodgers.



At right, are Rowena Hughes and Carolyn Mabry who work in the Bursars office.



BURSAR



The Bursar Office is the distribution office for all loans, student checks, enrollment fees, overdue library fines and all the financial business concerning the school. At left, Mellodean Morton. Below from left to right, Jo Bigham, Barbara Ray, Carol Coats, Linda Bass, Reba Diel, Laura Barnette, Ginger Smith, and Fonda Jenkins.



POSTAL AND HEALTH SERVICES

The Campus Post Office serves as a center for incoming and outgoing mail and provides much of the same services as any post office handling student and university mail. The Health Clinic provides a variety of health services to students.



Steve Easterwood (top right) supervises the post office, (middle) are Doris Morrison, Gary Labeth, Lisa Bagherpour, (bottom left) Dr. Gerald Buchanan and Jerry Zachery.



COMPUTER CENTER, PRINT SHOP AND SWITCHBOARD



Communication is a key word for those who process data, make and take calls and handle the printing for the campus and its people. They put in long hours to insure smooth intra-campus and intercampus communication.

Jerry Lucas (bottom right) is the supervisor of the switchboard.

E.F. Hawkins (middle right) and Bill Manners (top, left) are the supervisors of the Print Shop.



VOCATIONAL REHABILITATION AND KIAC

Vocational Rehabilitation is a government program that provides funds and services to those who have physical impairments and wish to attend school.



The Vocational Rehabilitation staff includes from left to right (front) Gladys Hill, Jane Goodman, Claudette Townsend and Vicki Anderson all Secretaries. (Back row) John Patty, J.V. Edwards, and Charles Houser, Counselors.

Kerr Industrial Applications Center is an agency which provides technical assistance for business and industry for Oklahoma and North Texas. The Center provides abstract materials and sources are available to students through KIAC's special information research.



At top right, Tom McRorey, Director of KIAC. At right, Geneva Newell is Administrative Assistant, and far right is Betty Cartwright, Program Developer.



AUXILIARY SERVICES AND MAINTENANCE DEPARTMENT



Auxiliary Services is responsible for room and board of university students living on campus in dormitories and apartments.

Bill Morton (top left) is head of Aux. Services, other workers are Juliette Cathey and Dorothy Prough. The Maintenance Department secretary is Janice DeSilva (bottom left) and a few of the other workers are pictured in the bottom middle and bottom right.



AUDIO VISUAL

Providing literary materials and equipment is the job of the Audio Visual Department. The students' educational experience is enhanced by the use of this service.

Pictured at right are J.B. Phillips (head of Dept.), and Wayne Coston; (middle row) Kay Davis, secretary. Student workers include Jill Davis and Gwen Parker. Below are Teresa Beam, Tammy Noltner and Randy Mitchell, John Wright.



GRADUATES



AKINPELY, ISIAKA



BESHIRS, BEVERLEY



COKER, JANICE
HASEEB, AHMAD
HATLEY, CARL
IKENYEI, STEVE
KAPARAKI, HARIKLIA



KROCK, ROBERTA
MADU, JOE
MARKLAND, ROBERT
MORGHAM, SALEM
MOSTOWFI, MEHDI



MUHANNA, SAQER
NYCE, DARNICE
ONUCHUKWA, GODFREY
POPO, CHRISTOPHER
PETERS, DAN



POTTER, DENA
RIND, GARY
TAWILL, MOHAED
THANACHAT, A.
WADVA, NAVJIT



SENIORS



Abdelmawla, Musa
Abdul-Jewad, Nedal



Abdulrahman, Fausal
Adeola, Samuel



Ajaj, Walid
Alexander, Bonnie



Angel, Luz
Anteau, Douglas
Anyaeqbuna, Johnny
Aoun, Omran
Armstrong, Aaron



Arstrong, Gail
Bain, Douglas
Barrett, Brenda
Barton, Terri
Bayliffe, Kimberly



Bennett, Linda
Bennett, Wayne
Boney, Pansy
Brooks, Mark
Buck, Daryl

Butler, Donald
 Copeland, Randy
 Conaway, Billy
 Cook, Donna
 Cradtree, Johnny



Craytor, Bart
 Crump, Donny
 Davis, Stanley
 Dean, Ava
 DeLashaw, Pamela



Dodd, Jeffrey
 Dudley, Virginia
 Emeagwai, Augustine
 Eugell, Martin
 Ferris, Chris



Fields, Jean
 Francis, Alice
 Frost, Sharla
 Gardner, Beverly
 Gilbert, Marcella



Gill, Cynthia
 Glapa, Richard
 Grimer, Paul
 Hall, Sherilea
 Harder, Dixie



Hatch, Kim
 Hattenhauer, Angel
 Haudtmann, Eugene
 Harman, Billy
 Hixon, Becky





Hocking, Becky
Hofferber, Stacey
Hopson, Beverly
Hossain, M.
Hughes, Melanie



Ike, Frelix
Inge, Curtis
Jackson, Joyce
Jolly, Delia
Jones, Corey



Karper, Woody
Kelley, Roy
Kennedy, Mike
Khor, Chaw
Kirk, Wynetta



Lam, Phong
Lassberg, Sandi
LeMonie, Donna
Manley, Donna
Miller, Eleanor



Miller, Ann
Miller, Michael
Miller, Shelley
Milton, Kathryn
Mobley, Gerald



Moore, Mary
Morris, Winona
McKeen, Donna
McNatt, Paige
Ndimba, Ghane

Nguyen, Ha
 Nguyen, Quoc
 Nguyen, Truoc
 Nkemadu, Irene
 Owens, Richard



Pardue, Victoria
 Parham, Billy
 Parker, Wesley
 Phillips, Beulah
 Pickens, Keith



Pittman, Gregory
 Plawecki, Daniel
 Pogue, Tommy
 Powell, Cathy
 Price, Mike



Ring, Glennis
 Robinson, William
 Reagan, John
 Saki, Morteza
 Scribner, Sonsecakra



Scrivner, Donna
 Settoon, Lori
 Showalter, Hal
 Smith, Marla
 Solenne, Elizabeth



Stallings, Susan
 Sumner, Patricia
 Sutton, Troy
 Swafford, William
 Swink, Jacqueline





Thomas, Kerrey
 Thompson, Trena
 Tolliver, Wayne
 Tondo, Marisa
 Trammell, Jerry



Turner, Sebrina
 Umezulike, Bedford
 Venable, Robert
 Veronesi, Carol
 Washburn, Neal



Wells, Rick
 Whisman, Robert
 Whitlack, David
 Williams, Billy
 Williams, Kacey



Wilson, Sharon
 Young, Jacqueline

JUNIORS



Kim Frizzell, of Heavener, waits to give blood.

Alam, Sheikh
Alexander, Anthony
Allen, Charles
Allen, Chris
Barnes, Martha



Bates, Marna
Beall, Janice
Bearden, Donna
Bell, Jason
Bethencourt, Estela



Blackburn, Mitzi
Bolt, William
Brebner, Todd
Brewer, Bo
Brewer, Robert





Butler, Kimberly
 Cambell, Kenneth
 Caplinger, Lori
 Castleberry, Derroin
 Cates, Keevin



Chowdhury, MdKhaled
 Chronister, Keith
 Collom, Cynthia
 Davenport, Tina
 Earwood, Gerald



Edwards, Janna
 Erwin, Lance
 Estrada, Juan
 Estes, Lisa
 Frazier, Mark



Gilstrap, Luana
 Glenn, Ruth Ann
 Grider, Betty
 Hackett, Janice
 Haskins, Cathy



Hendricks, Bobby
 Hendricks, Sylvia
 Hill, Kevin
 Hodges, Clifton
 Homerding, Todd



Horton, Cliff
 Houston, Arlene
 Igbonoba, Charlie
 Jacks, Stewart
 James, Karl

James, Sharon
 Jenkins, Gregory
 Kenedy, Julie
 Khan, Arif
 Kirawa, Kadi



Kirkendoll, Rick
 Kreceman, Kris
 Kuykendall, Eric
 Loper, Brenda
 Loucks, Sammy



Lucas, Dave
 Lundry, Jan
 Magan, Bharat
 Manous, Freda
 Masters, Freda



Matlock, Terry
 Mattingly, Clint
 Mayes, Leon
 Mbanyam, George
 Means, Champ



Medders, Sharla
 Milby, Wesley
 Montgomery, Mark
 Muoneke, Maiihe
 McCarty, David



Nuss, Randall
 Onwuka, Amerose
 Oparaddu, Maxwell
 Petree, Renna





Puckett, Beverly
 Rambo, Hayley
 Reynolds, David
 Reynolds, Stephen
 Riddle, Jean



Roberts, Martha
 Robinson, Susan
 Sexton, Stephanie
 Shah, Syed
 Shanklin, Darnell



Shearer, Emma
 Smith, Lee
 Solomon, Michelle
 Steelman, Sherry
 Stephens, Philip



Stevens, Linnea
 Stone, Sherry
 Strawn, Cathy
 Strickland, Katherine
 Stuart, Jerry



Thomas, Marie
 Thomas, Martha
 Thompson, Christopher
 Thompson, Scott
 Trammell, Curtis



Tucker, Kimberly
 Umana, Miguel
 Waters, Smokey
 Wharton, Carla
 Williams, Arlen

Wilson, Brenda
Wiggins, Jonkeeta
Winfree, Charla
Worsham, Lou Ann
Young, Patricia



Zoha, Syed





Bret Metcalf and Mike Cantley take a break from MTV.

SOPHOMORES



Ahmed, Jamil
 Akhter, Shamim
 Akins, Charles
 Allen, Brett
 Andrews, Connie

Andrews, John
 Arnot, Jo
 Bacon, Lisa
 Bacon, Paula
 Baroody, Michel

Barrett, Pamala
 Basu, Satyendra
 Bates, Denise
 Beam, Teresa
 Bintory, Tahir



Blankenship, Carol
 Blankenship, Tammy
 Blocker, Frank
 Bryan, Lisa
 Buckley, Kimberly



Bufkin, Donna
 Caplinger, Lisa
 Carroll, Terry
 Carvajal, Fernando
 Chaffin, Kenny



Chandler, Connie
 Chowdhury, Asifur
 Chowdhury, Manzoor
 Cline, Angella
 Cody, Tommie



Collins, Dale
 Comstock, Jim
 Converse, Mike
 Cook, Terri
 Cooney, Kathey



Copeland, Elizabeth
 Corbin, Kay
 Cunningham, David
 Dane, Mary
 Deisher, Jean





Dodd, Roger
Engles, Laura
Faulkner, Danny
Fuoco, Steve
Gilstrap, Catherine



Gitundu, James
Gold, Laura
Graves, Lori
Green, Kandye
Griffin, Karyn



Haigler, Shamim
Harvey, Jay
Hime, Kevin
Hixon, Tammye
Homer III, Myles



Huddleston, Robert
Huey, Pete
Huq, Ekramul
Hurtado, Monica
Ikenyei, Sylvester



Jackson, Bruce
Jacobu, Joseph
Jalaludoin, J.
James, Francis
January, Tonya



Khan, Ashrafur
Khan, Sardar
Kilburn, Thomas
Kisinger, Linda
Kitchens, Laurie

Lankford, Melanie
 Manous, Freda
 Martin, Lisa
 Medlin, John
 Meeks, Jane



Metcalf, Bret
 Morris, Laketa
 Nguyen, Minh
 Nizami, Ahm
 Noltner, Tamara



Obiorah, Benedict
 O'Dell, Shannon
 Okwu, Cyriacus
 Oliver, Gloria
 Onaneye, Johnson



Parker, Gwendolyn
 Pauls, Judy
 Robbins, Bobby
 Ross, Lee
 Rouwar, John



Russell, Steven
 Saeed, Qaiser
 Sayers, Jayleen
 Scott, Gary
 Scott, Tammy



Shackleford, Tammy
 Shakoor, Shahab
 Sherrer, Kendell
 Smith, Darryl
 Slack, Norma





Shields, Veryl
Six, Karen
Speaks, Bennie
Spearman, Terry
Spearer, Antonio



Straight, Pallin
Tannehill, Terry
Taylor, Kathy
Taylor, Kirt
Thal, Ha



Thompson, Allison
Truong, Uyen
Wahid, Mohd
Walsh, Lisa
Ward, Jackie



Washington, Lonzine
Watkins, Debie
Weber, Sabina
Wellington, Shonda
West, Gerald



White, David
Whitlock, Sherri
Whitlock, Terri
Wilson, Penni
Winters, Gregory



Woody, Lisa
Wyatt, Robert
Yates, Timothy
Zaidi, Syed

F R E S H M E N

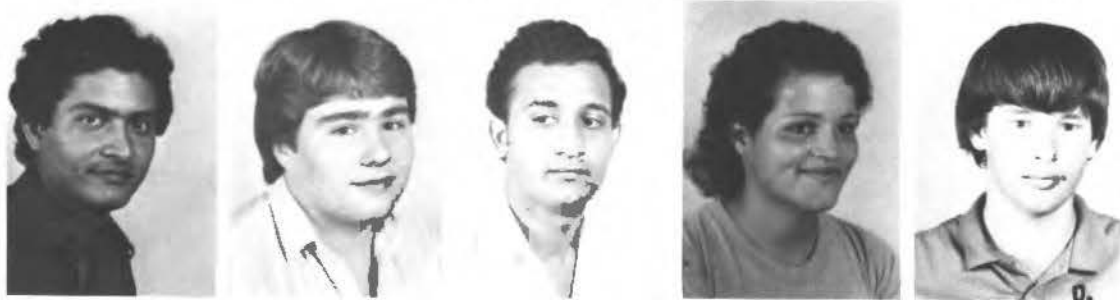


Freshmen talking and relaxing over a coke at the coffee shop.

Abbas, Zulfiqar
Acker, Marty
Adams, Lewis
Ahmad, Israr
Ahmed, Shafique



Almed, Syed
Alexander, Jeffery
Ali, Faiz
Allen, Edythe
Austin, Danny



Barton, Angela
Beasley, Nick
Brady, Beth Ann
Brese, Becky
Brewster, Leni





Brown, Betty
 Brumley, Richard
 Bruner, Clayton
 Bunch, Shelley
 Bundrant, Lela



Byans, Linda
 Byler, Jennifer
 Casey, Angela
 Cambell, Catherine
 Carter, Ruby



Cates, Lori
 Cathey, Naomi
 Carrell, Pat
 Chon, Sung
 Clay, Suzanne



Coffey, Vicki
 Collins, Vicki
 Cooney, Donna
 Cooper, Sheila
 Craft, Patricia



Crusoe, DeeAnne
 Culbertson, Rebeeka
 Cummings, Lisa
 Danley, Victoria
 Davenport, Anna



Davidson, Kelly
 Davis, Darla
 Davis, Jill
 Davis, Thomas
 Dean, Darrin

Dickson, Michael
 Dill, Traci
 Dohrer, Jon
 Dotson, Larry
 Douglas, Norma



Dudley, Jeffery
 Ebert, Cynthia
 Effinger, James
 Elmore, Janet
 Ensey, Christina



Errica, Al
 Everett, Debbie
 Fluellen, Keith
 Fodge, Becky
 Fogelberg, Karen



Fogelberg, Karla
 Foster, B.J.
 Fowler, Brenda
 Franklin, Allen
 Franklin, Sherry



Frost, Gwen
 Garrison, Dennis
 Gibson, Rhonda
 Gills, Shawn
 Graham, Stacey



Grant, Tracy
 Gonzalez, Gustavo
 Haddock, Rick
 Haper, Kelly
 Hassan, Mohamad





Hardy, Tim
Hightower, William
Holland, Sara
Hopkins, Andrea



Horner, Jeanie
Jackson, Kimberly
James, Charlotte
Jestis, René
Jones, Kenny



Kever, Phyllis
Kerr, Tammy
Kirkendoll, Marsha
Kisl, L.
Large, Jeania



Lawless, Beverly
Lema, Angela
Lema, Ricardo
Lemons, Lori
Lewis, Cecil



Lowder, Betty
Lynch, Carla
Mackey, William
Mason, Cadetta
Massuere, Sheri



Mastere, Jim
Means, Kevin
Meeks, Lucinda
Mercer, Donald
Miller, Estelle

Monroe, Michael
 Mulkey, Lisa
 Muncrief, Wayland
 Murray, M.
 McCalister, Steven



McCann, Lawanna
 McLarry, Vicki
 Nance, Karen
 Offield, Donnie
 Owens, Tammy



Park, Ivan
 Pate, Charlotte
 Pate, Sarah
 Peters, Teresa
 Peterson, Jenetta



Phillips, Kimberly
 Pittman, David
 Prater, Jeff
 Pride, Jackie
 Purser, Shirley



Rafiqi, Sohail
 Rahman, Abdul
 Raley, Donny
 Rawlins, Cathy
 Reust, Troy



Reynaert, David
 Richardson, Missie
 Risdén, Robyn
 Rivera, José





Roberts, Shawna
 Robinson, Rhonda
 Rodman, Dennis
 Rose, Selena
 Rozzell, Craig



Rutherford, Thomas
 Saha, Pronay
 Snaders, Kathy
 Schimmels, Don
 Schimmels, Gary



Scott, Freda
 Scott, Julie
 Sherrer, Katrina
 Shipp, Shanon
 Sims, Virginia



Slaten, Susan
 Slattery, Leisa
 Smith, David
 Smith, Jerry
 Smith, Mark



Smith, Mary
 Smith, Patti
 Smith, Rick
 Stahl, John
 Staton, Roberta



Stout, James
 Stowers, Caroline
 Tatum, Mary
 Taylor, Kristi
 Teel, Gloria

Thrasher, Micheal
 Tobin, Rose
 Treat, Karen
 Tyree, Patsy
 Underwood, Mary



Wagner, Cheryl
 Wagner, Karen
 Williams, Mary Ann
 Waheed, Mohammed
 Weaver, Sandra



Weir, Jana
 Whatley, Kathy
 Whatley, Kevin
 Whittington, Jeff
 Wilson, Juanita



Wooley, Rose
 Worsham, Cindy
 Worsham, Mindy
 Worsham, Tery



Tonya Gibson (right) talks to a friend
 at a Student Senate Dance.

CLOSING



CLOSING



CLOSING

